



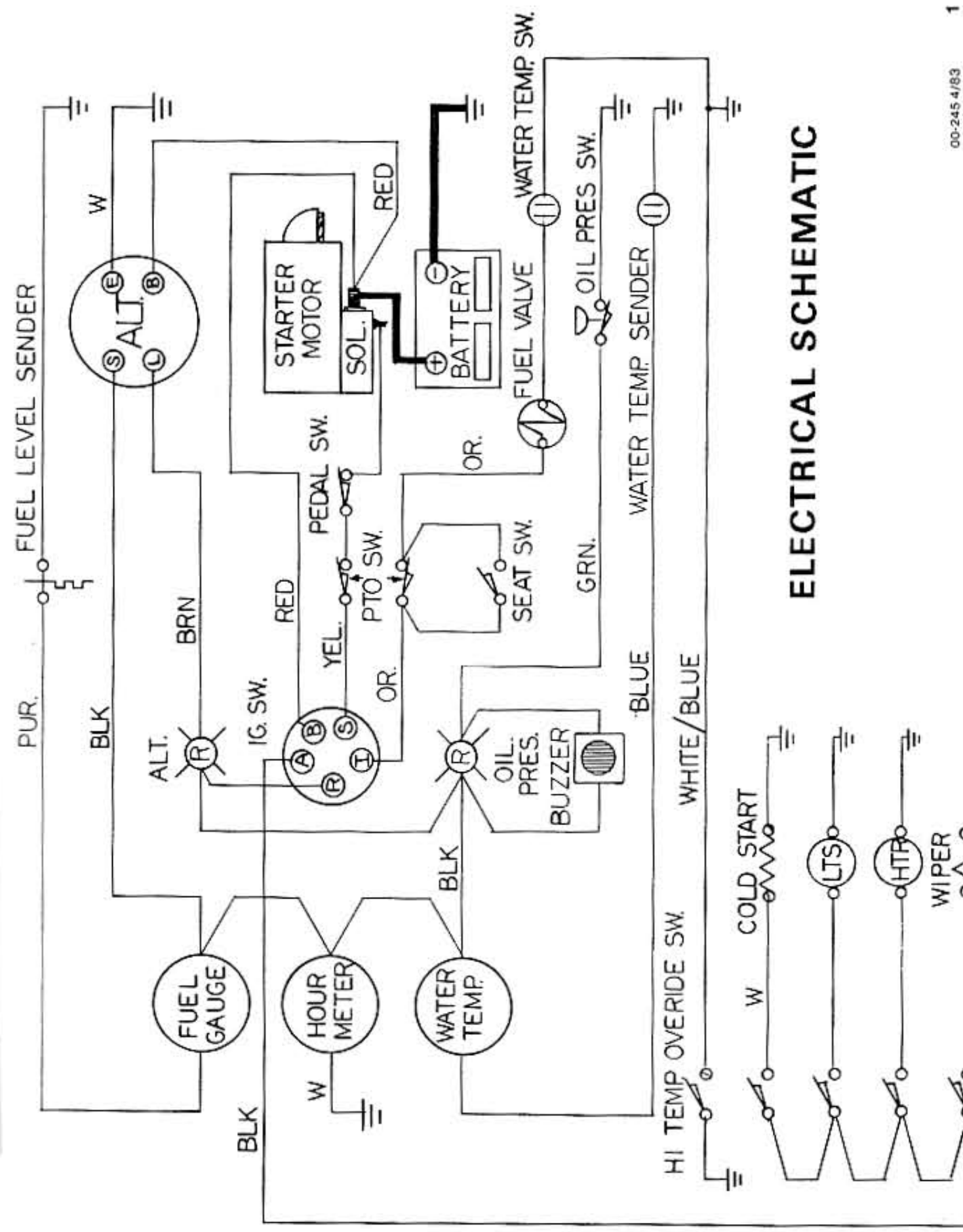
18155 Edison Avenue • Chesterfield, Missouri 63017

TURF BLAZER

727

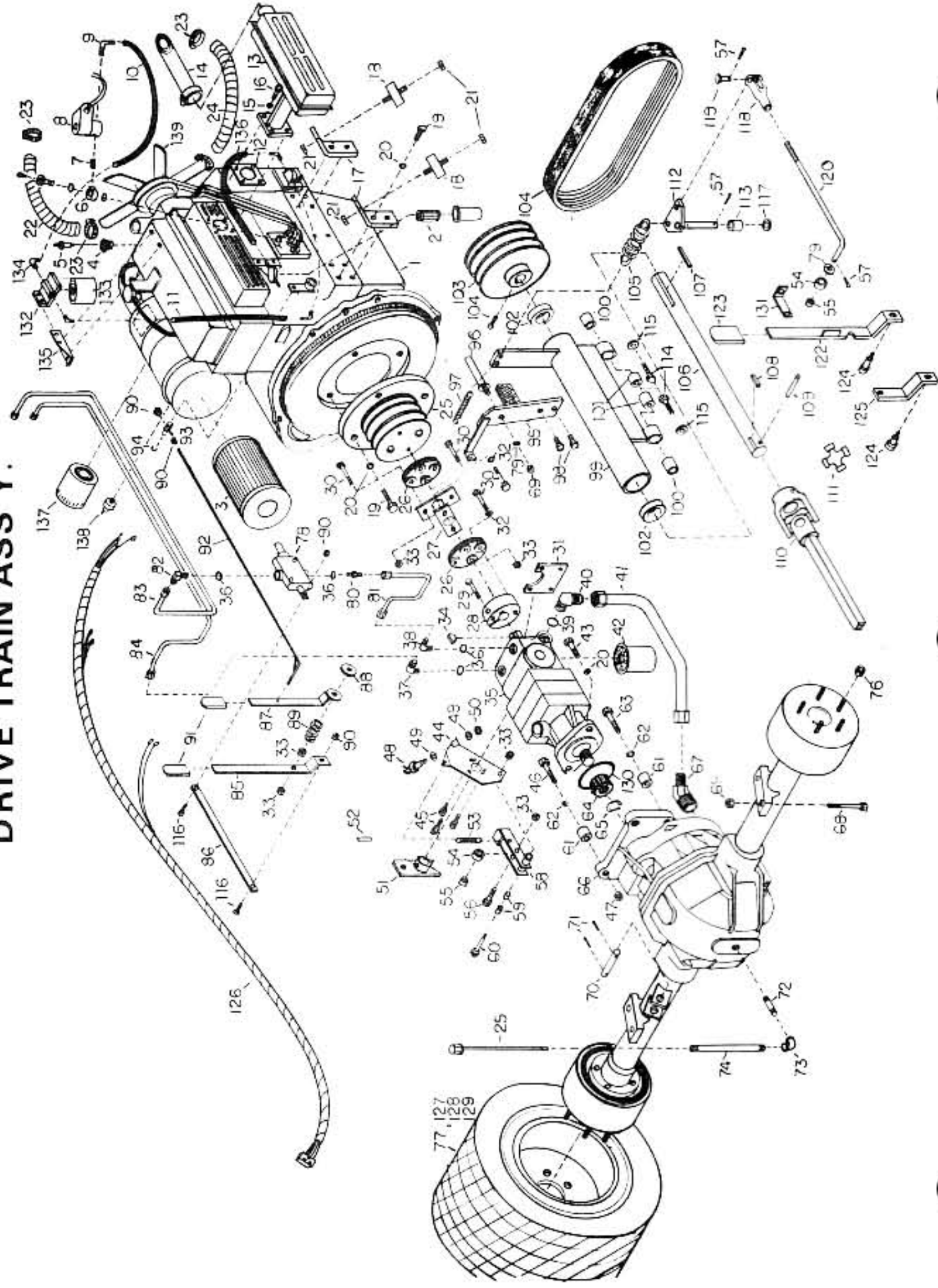
PARTS MANUAL

MODEL 72Y27 TRACTOR
MODEL C72D ROTARY MOWER
MODEL C60D ROTARY MOWER



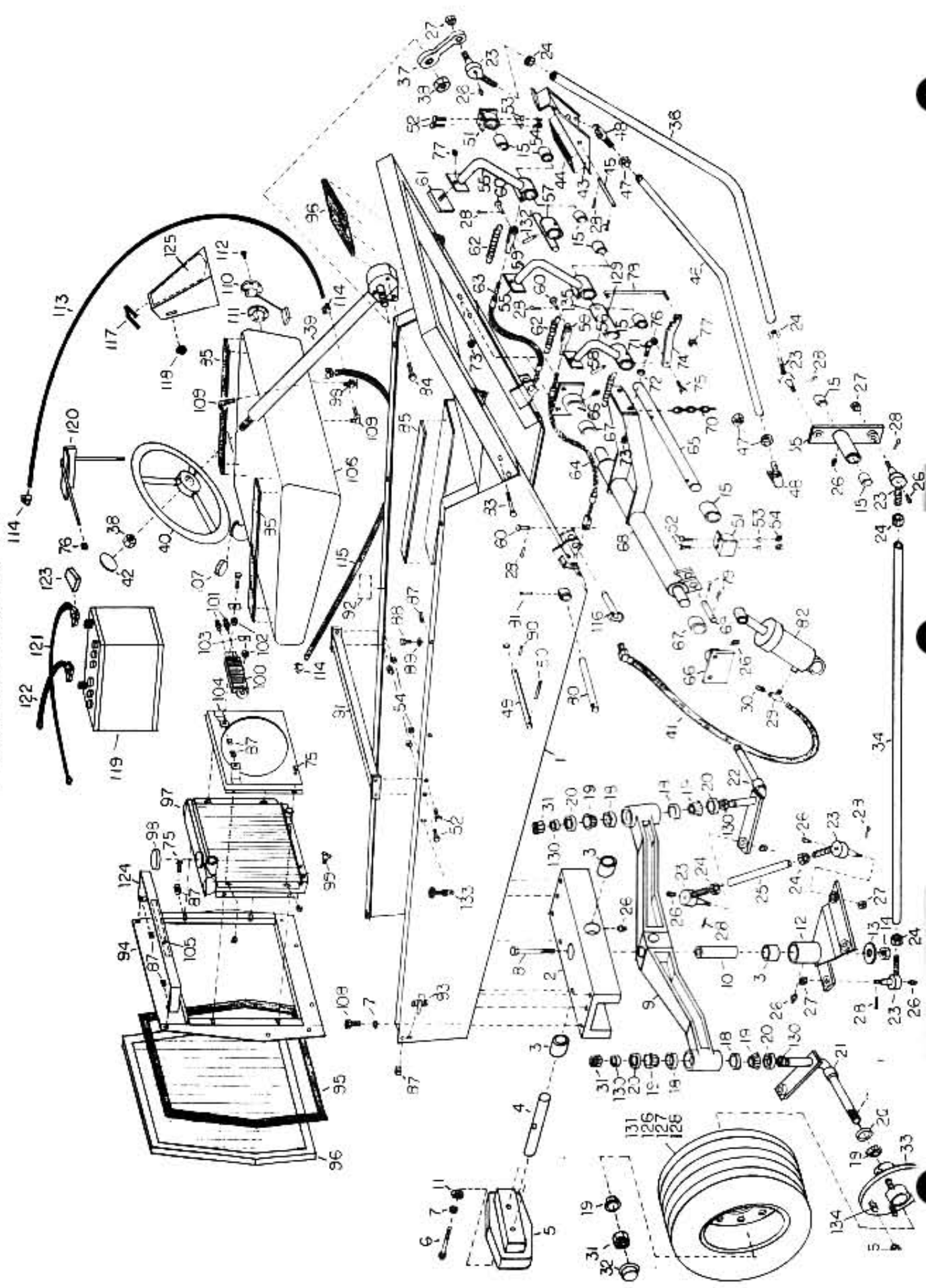
ELECTRICAL SCHEMATIC

DRIVE TRAIN ASS'Y.



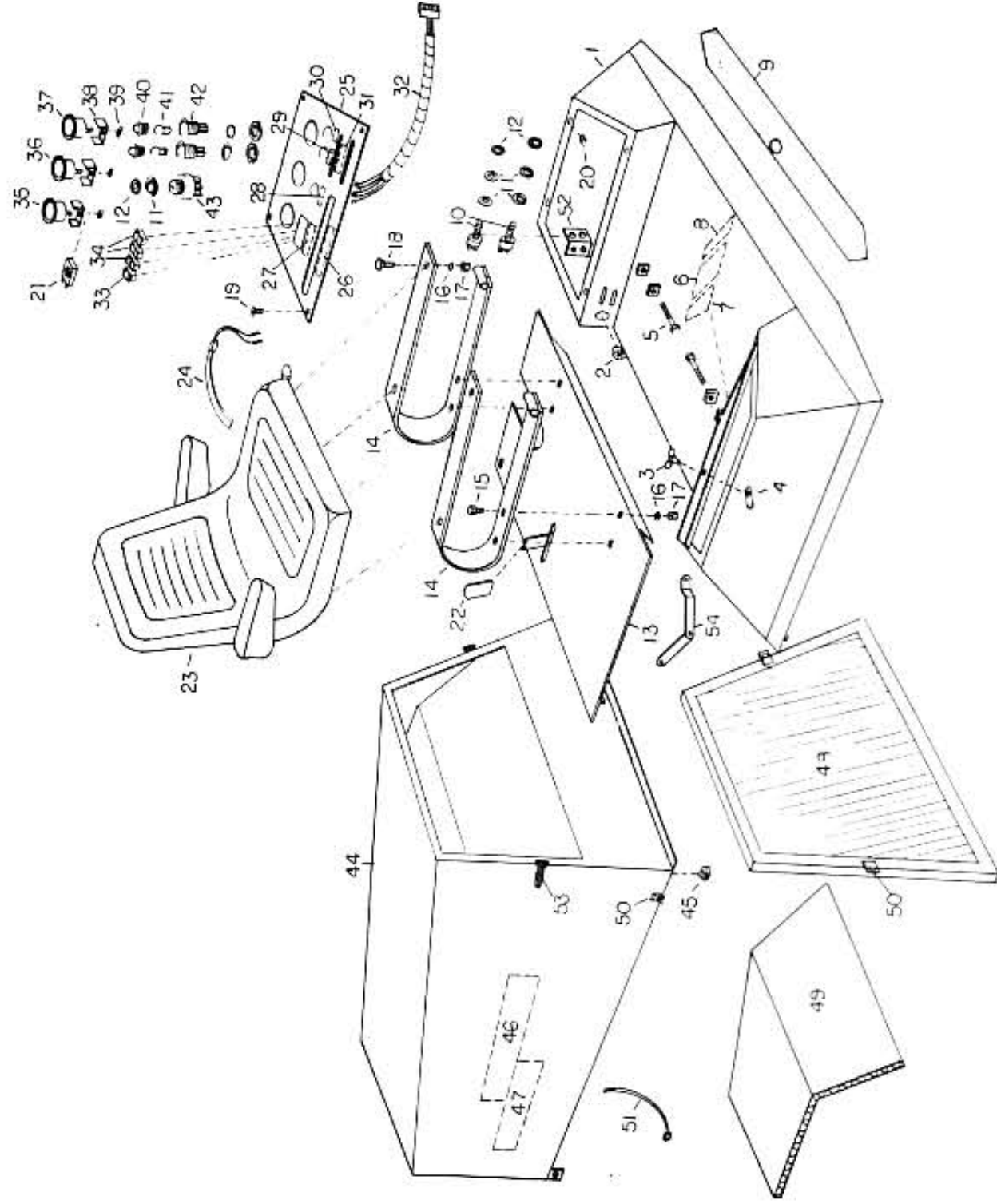
Item Number	Req'd.	Description	Item Number	No. Req'd.	Description	Item Number	Req'd.	Description
1	04-135	Engine	47	1112	Locknut - 3/8-16	93	05-038	Throttle Rod Swivel
2	124550-55700	Fuel Filter Element	48	5018	Neutral Safety Switch	94	05-039	Retaining Ring
3	121256-12510	Air Cleaner Element	49	1764	Lockwasher - 5/8"	95	05-028	PTO Brake Assy
4	03-701	Bushing	50	1765	Hex Nut - 5/8"	96	05-029A	Upper Belt Guide
5	02-131	Water Temp Sender	51	05-018A	Transmission Lever	97	4114	PTO Brake Spring
6	03-702	Injection Pump Inlet Fitting	52	1131	Roll Pin - 1/4 x 1"	98	1031	Bolt
7	03-703	Nipple	53	5013	Spring	99	05-030A	PTO Shaft Housing
8	03-704	Fuel Shutoff Valve	54	05-019	Roller	100	4173	Bushing
9	5259	Hose Fitting - 90°	55	04-134	Bushing	101	05-095	Insert - PTO Pivot
10	03-705	Valve/Separator Hose - 22"	56	1767	Bolt	102	04-118A	PTO Shaft Bearing
11	03-707	Fuel Pump/Separator Hose - 15-1/2"	57	1600	Collar Pin	103	04-117	PTO Pulley
12	121450-13200	Exhaust Flange Gasket	58	05-020	Neutral Strap	104	3484	PTO Bell
13	121454-13490	Muffler	59	04-129	Bushing	105	05-132	PTO Spring
14	121454-13650	Tail Pipe	60	1766	Bolt	106	05-031	PTO Shall
15	22217-080000	Lockwasher 8mm	61	05-021	Spacer	107	1310	Key
16	26716-080002	Bolt - M8	62	1202	Lockwasher - 3/8	108	1311	Key
17	05-014	Engine Mount Bracket	63	1031	Bolt	109	1133	Roll Pin 5/16" x 1 1/8"
18	04-036	Motor Mount	64	05-116	Drive Gear	110	04-119A	Drive Shaft Female
19	26116-120302	Bolt - 12mm 175mm Pitch	65	6031	Retaining Ring	111	4146	U-Joint Repair Kit
20	22217-120000	Lockwasher - 12mm	66	05-001	Transaxle	112	05-032	PTO Belcrank
21	1740	Locknut - 3/8 - 24	67	03-685	Fitting - 45°	113	05-033	Spacer
22	05-118	Upper Radiator Hose	68	1040	Bolt	114	1033	Bolt - 1/2 x 1-1/2"
23	05-120	Hose Clamp	69	1112	Locknut - 3/8 - 16	115	1222	Flatwasher - 3/8"
24	05-119	Lower Radiator Hose	70	05-022	Cyl Mount Pin	116	1778	Machine Screw - 10-32 x 1"
25	04-116	Drive Pulley	71	1609	Collar Pin	117	1223	Flatwasher - 1/2"
26	5005C	Coupling Disc	72	03-098	Nipple - 1/2 x 3-1/2"	118	5164	Clevis
27	05-016	Coupling Shaft	73	03-691	Nipple - 1/2 x 11-1/2"	119	5160	Clevis Pin
28	05-133	Trans. Coupling Adaptor	74	03-686	Dipstick	120	05-035	PTO Linkage Rod
29	1066	Bolt	75	05-023	Lugnut	122	05-036	PTO Lever
30	1763	Bolt	76	04-142	Wheel Assy	123	05-121	PTO Handle Grip
31	05-111	Stabilizer BRKT.	77	05-004	Tube	124	1737	Bolt
32	1221	Flatwasher - 5/16"	78	03-661A	Lift Valve	125	05-037	PTO Lock Lever
33	1115	Locknut - 5/16 - 24 SAE	79	1222	Flatwasher - 3/8"	126	02-103	Chassis Wiring Harness
34	6602	Key	80	03-076	Fitting - 6400 x 6	127	05-005	Drive Wheel
35	03-659	Transmission	81	03-665	Tube	128	05-006	Drive Tire
36	03-708	O-Ring	82	03-692	Fitting - 90° 6801 x 8 x 6	129	05-007	Drive Tire Repair Tube
37	03-708	Fitting 90° 6801 x 8 x 6	83	03-683A	Tube	130	03-235	1/8" Ring
38	03-663	Fitting 90° 6801 x 6 x 6	84	03-666A	Lift Valve Lever	131	05-077	PTO Rod Retainer
39	03-129	O-Ring	85	05-024	Lift Valve Linkage Rod	132	03-286	Fuel/Water Separator
40	03-696	Fitting 90° 6801 x 12 x 10	86	05-025A	Throttle Lever	133	03-287	Separator Element
41	03-668	Tube	87	05-026	Friction Pad	134	03-229	Fitting 90°
42	6033	Filter Cartridge	88	5033	Spring	135	05-100	Separator Bracket
43	1032	Bolt	89	5034	Locknut - 10-32	136	05-140	Filter/Fuel Pump Hose - 16"
44	05-017	Neutral Adj. Plate	90	1117	Handle Grip	137	05-085	Oil Filter Element
45	1014	Bolt - 1/4	91	05-143	Throttle Linkage Rod	138	02-138	Oil Pres. Sw.
46	1036	Bolt - 3/8-16 x 2-1/4"	92	05-027		139	121400-44740	Fan

FRAME ASS'Y.



Item	Number	Req'd.	Description	Item	Number	Req'd.	Description	Item	Number	Req'd.	Description
1	05-000	1	Frame	46	05-051A	1	Traction Linkage	91	05-062	1	Frame Brace
2	05-128	1	Rear Yoke	47	1108	4	Half Nut - 9/16 - 18	92	00-044	1	Decal - "Desert Fuel"
3	4121	4	Bushing	48	04-146	2	Ball Joint	93	05-136	2	Toggle Latch
4	05-040	1	Pivot Pin	49	05-149	1	Bypass Valve Ext.	94	05-063A	1	Radiator Mount Bracket
5	05-130	1	Rear Weight	50	1130	1	Roll Pin 3/16 x 1 1/2"	95	00-080	7	Weatherstrip
6	1035	2	Bolt - 3/8 - 16 x 2"	51	05-052	2	Brake Shaft Bracket	96	05-064	1	Rear Screen
7	1202	10	Lock Washer	52	1020	8	Bolt - 5/16 - 18 x 3/4	97	05-117	1	Radiator
8	1762	1	Bolt - 1/2 - 13 x 6-1/2"	53	1201	8	Lockwasher	98	06-024	1	Radiator Cap
9	05-151	1	Rear Axle	54	1102	8	Hex Nut	99	03-135	2	Petcock
10	05-041	1	Belcrank Pivot Pin	55	05-053	2	Single Brake Lever	100	03-810	1	Oil Cooler
11	1769	2	Flatwasher	56	05-152	1	Dual Brake Lever	101	03-246	1	Fitting
12	05-042	1	Steering Belcrank	57	05-055	1	Dual Brake Tie Bar	102	05-013	2	Grommet
13	1223	1	Flatwasher	58	1132	2	Roll Pin - 1/4 x 1-1/4	103	05-087	2	Clamp Plate
14	1770	1	Slotted Nut	59	5039	2	Clevis	104	05-065	1	Fan Shroud
15	4122	8	Bushing	60	5160	4	Clevis Pin	105	00-036	1	Decal - "Rotating Blade"
16	05-148	10	Lug Nut	61	5276	3	Brake Pedal Pad	106	05-124	1	Fuel Tank
17	05-084	2	Hood Latch	62	4114	3	Spring	107	05-066	1	Fuel Tank Cap
18	04-007	4	Bearing Cup	63	05-113	1	Brake Cable - Short	108	1719	8	Bolt - 3/8 - 16 x 3/4
19	04-165	4	Bearing Cone	64	05-112	1	Brake Cable - Long	109	5259	2	Fitting - 90°
20	04-006	5	Seal	65	05-056	1	Brake Shaft	110	05-067	1	Fuel Level Sender
21	05-109	1	Spindle - Right	66	05-057	2	Lift Bar Mounting Bracket	111	05-068	1	Gasket
22	05-108	1	Spindle - Left	67	04-123	2	Bearing	112	1777	1	Screw
23	04-120	8	Ball Joint	68	05-058A	1	Lift Bar Assy	113	05-139	1	Hose - Fuel Tank/Filter
24	1772	8	Half Nut - 5/8 - 16	69	05-022	1	Lift Cyl. Pin	114	04-082	8	Hose Clamp
25	05-045	2	Tie Rod	70	05-142A	2	Lift Chain	115	05-141	1	Hose - Engine/Tank Return
26	1500	16	Grease Fitting	71	1032	2	Bolt	116	1236	2	Push Arm Pin
27	1773	8	Slotted Nut	72	1222	2	Flatwasher	117	04-059	7	Trim Molding
28	1600	11	Cotter Pin	73	1112	6	Lock Nut	118	05-127	1	Knob - Brake Latch
29	03-775	1	Fitting	74	05-153	1	Brake Latch Bar	119	5037	1	Battery
30	1302	1	Plug 1/4"	75	1000	11	Bolt - 1/4-20 x 3/4	120	05-070	1	Battery Holddown Bracket
31	1701	2	1-14 Slotted Hex Nut	76	1110	5	Locknut - 1/4"	121	02-070	1	Battery Cable - Pos
32	04-113	2	Hub Cap	77	1775	1	Locknut - 10-32	122	02-071	1	Battery Cable - Ground
33	05-144	2	Wheel Hub	78	05-060	1	Brake Latch Linkage Rod	123	5132	1	Battery Cable Boot
34	05-046	1	Rear Steering Linkage	79	1608	4	Cotter Pin	124	05-150	1	Radiator Duct
35	05-047	1	Steering Pivot	80	05-061	1	Steering Pivot Pin	125	00-033	1	Decal - "Logo"
36	05-048	1	Front Steering Linkage	81	1131	1	Roll Pin - 1/4 x 1	126	05-147	1	Rear Wheel
37	05-115	1	Steering Gearbox Lever	82	03-667	1	Cylinder	127	05-010	1	Rear Tire
38	1123	2	Hex Nut - 5/8 - 18	83	1026	4	Bolt	128	05-011	1	Rear Tube Repair Ruber
39	05-114	1	Steering Column/Gearbox	84	1741	2	Bolt	129	05-078	1	Brake Shaft Spacer
40	05-125	1	Steering Wheel	85	00-083	6	Weatherstrip	130	05-154	4	Steering Spindle Spacer
41	03-794	1	Hose - Lift Valve/Cylinder	86	00-047	1	Anti-Skid, Floor	131	05-145	1	Rear Wheel/Tire Assy
42	05-144	1	Wheel Cover	87	1732	18	"U" Nut	132	1132	2	Roll Pin - 1/4 x 1-1/2
43	05-049	1	Traction Pedal	88	1003	4	Bolt	133	05-084	2	Lug Bolts
44	00-052	1	Non-Skid, Pedal	89	1220	4	Flatwasher	134	04-009	10	Lug Bolts
45	05-050	1	Pedal Pin	90	1135	1	Roll Pin 3/16 x 1 1/4"	135	05-159	1	Brake Lever Spacer

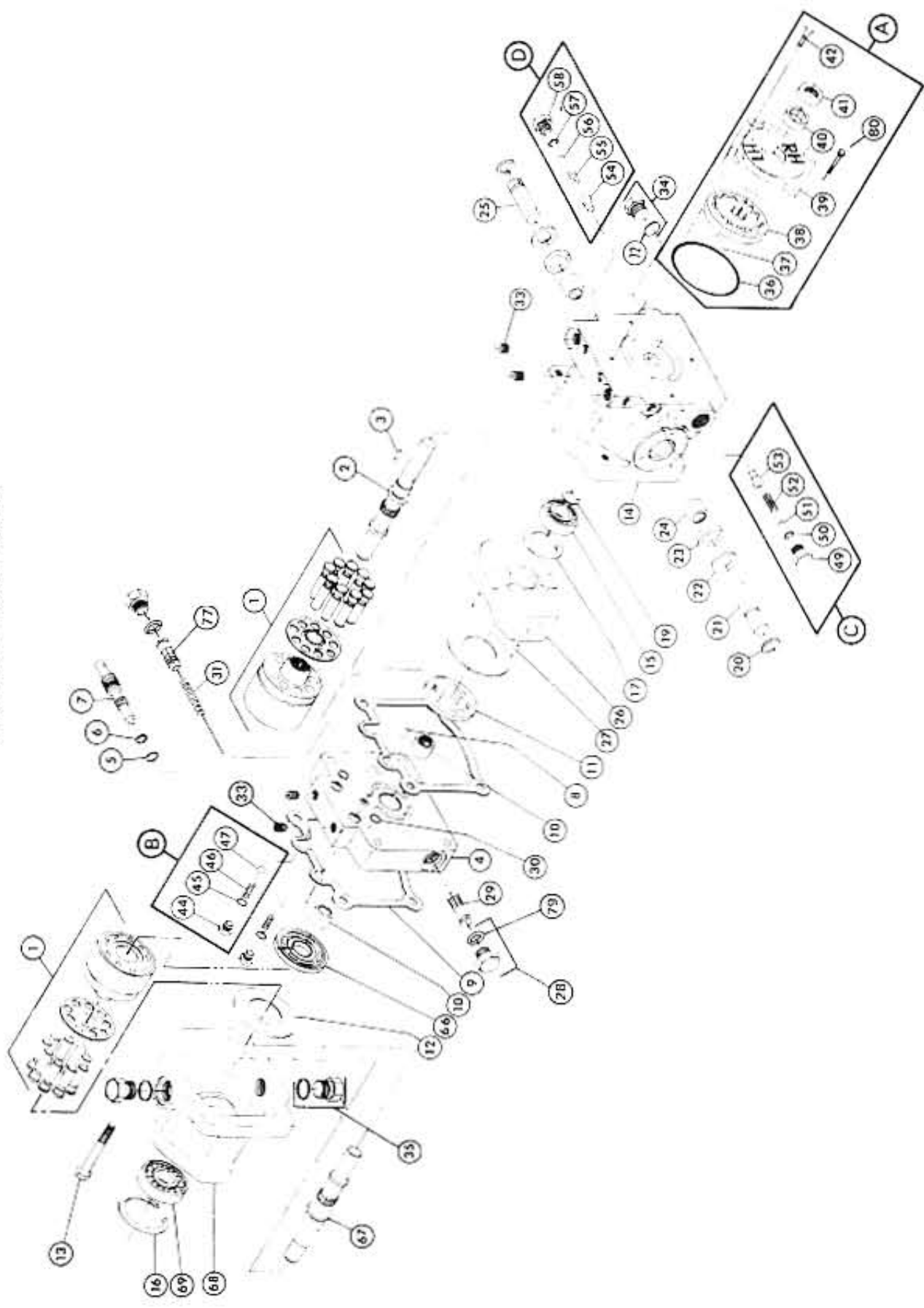
COVERS



Item	Number	No. Req'd.	Description	Item	Number	No. Req'd.	Description
1	05-071	1	Cowling	28	00-042	1	Decal - Ignition Switch
2	04-126	1	Bushing	29	00-041	1	Decal - Oil Pressure
3	04-050A	1	Knob	30	00-043	1	Decal - Alternator
4	04-050B	1	Latch	31	00-038	1	Decal - Throttle/Lift Valve
5	1029	2	Bolt - 5/16 - 18 x 3-1/2"	32	02-104	1	Wiring Harness - Inst./Panel
6	7005	1	Decal - Operating Instructions	33	02-072	1	Switch - Momentary Contact
7	00-045	1	Decal - Parking Brake	34	02-073	3	Switch - Maintained Contact
8	00-046	1	Decal - Traction Pedal	35	5122	1	Hour Meter
9	00-051	1	Anti-Skid - Floor	36	02-052	1	Water Temp. Gage
10	5018	2	Safety Switch - N.O.	37	02-054	1	Fuel Level Gage
11	1764	5	Lockwasher	38	02-055	3	Gage Mounting Bracket
12	1765	3	Hex Nut	39	1775	3	Locknut
13	05-072A	1	Trans. Access Cover	40	02-026	2	Red Lens
14	05-082	2	Seat Spring	41	02-025	2	Bulb
15	1021	4	Bolt - 5/16 - 18 x 1"	42	02-024	2	Light Socket
16	1201	8	Lockwasher - 5/16"	43	02-074A	1	Ignition Switch
17	1102	8	Hex Nut - 5/16 - 18	44	05-074A	1	Hood
18	1776	4	Bolt - 5/16 - 18 x 1" Carriage	45	05-138	2	Rubber Bumper
19	1748	4	Machine Screw	46	00-035	2	Decal - Turf Blazer
20	1732	4	"U" Nut	47	00-034A	2	Decal - 727 Diesel
21	02-117	1	Buzzer	48	05-156	1	Screen - Front
22	05-143	1	Handle Grip	49	05-157	1	Insulation - Sides
23	05-122	1	Seat	50	05-137	1	Striker
24	5219	1	Seat Safety Switch	51	05-080	2	Hood Restraint
25	05-073	1	Instrument Panel	52	05-155	1	Safety Switch Brkt.
26	00-039	1	Decal - "PTO"	53	05-084	2	Latch
27	00-040	1	Decal - Switches	54	05-094	1	Access Cover Brace

TRANSMISSION

COMPLETE ASS'Y 03-659



Item	Number	No. Req'd.	Description	Item	Number	No. Req'd.	Description
1	6600	2	Cyl. Block Kit	37	6633	1	Straight Pin
2	6601	1	Pump Shaft	38	6634	1	Gerotor Assy
3	6602	1	Woodruff Key	39	6635	1	Chg Pump Housing
4	6603	1	Center Section	40	6636	1	Needle Bearing
5	6604	1	O Ring	41	6637	1	Lip Seal
6	6605	1	Ring	42	6638	2	Bolt
7	6606	1	Bypass Valve	44	6639	2	Chk Valve Plug
8	6607	2	Straight Pin	45	6640	2	O Ring
9	6608	2	Gasket	46	6641	2	Chk Valve Spring
10	6609	2	Roller Bearing	47	6642	2	Ball
11	6610	1	Pump Valve Plate	49	6643	1	Plug
12	6611	2	Thrust Plate	50	6644	1	O Ring
13	6612	4	Bolt	51	6645	2	Shim Pack
14	6613	1	Pump Housing	52	6646	1	Chk Rel Val Spring
15	6614	1	Ball Bearing	53	6647	1	Chk Rel Val Cone
16	6615	1	Retaining Ring	54	6648	1	Imp Rel Val Cone
17	6616	1	Retaining Ring	55	6649	1	Imp Rel Val Spring
19	6617	1	Retaining Ring	56	6650	2	Shim Pack
20	6618	2	Retaining Ring	57	6651	1	O Ring
21	6623	1	Trunion Shaft	58	6652	1	Plug
22	6620	2	Washer	66	6653	1	Motor Valve Plate
23	6621	2	Lip Seal	67	6654	1	Motor Shaft - Splined
24	6622	2	Needle Bearing	68	6655	1	Motor Housing
25	6619	1	Trunion Shaft	69	6656	1	Ball Bearing
26	6624	1	Swashplate	72	6657	1	O Ring
27	6625	3	Spring Pin	77	6658	1	Accel Valve
28	6626	2	Plug	79	6659	2	O Ring
29	6627	1	Accel Valve	80	1019	2	Bolt
30	6628	2	O Ring	A	6089	-	Kit - Chg. Pump
31	6629	1	Accel Spring	B	6088	-	Kit - Chk. Valve
33	6630	6	Pipe Plug	C	6128	-	Kit - Relief Valve
34	6631	1	Plug	D	6129	-	Kit - Relief Valve
35	03-790	2	Fitting				
36	6632	1	O Ring				

TRANSAXLE

COMPLETE ASS'Y 05-001

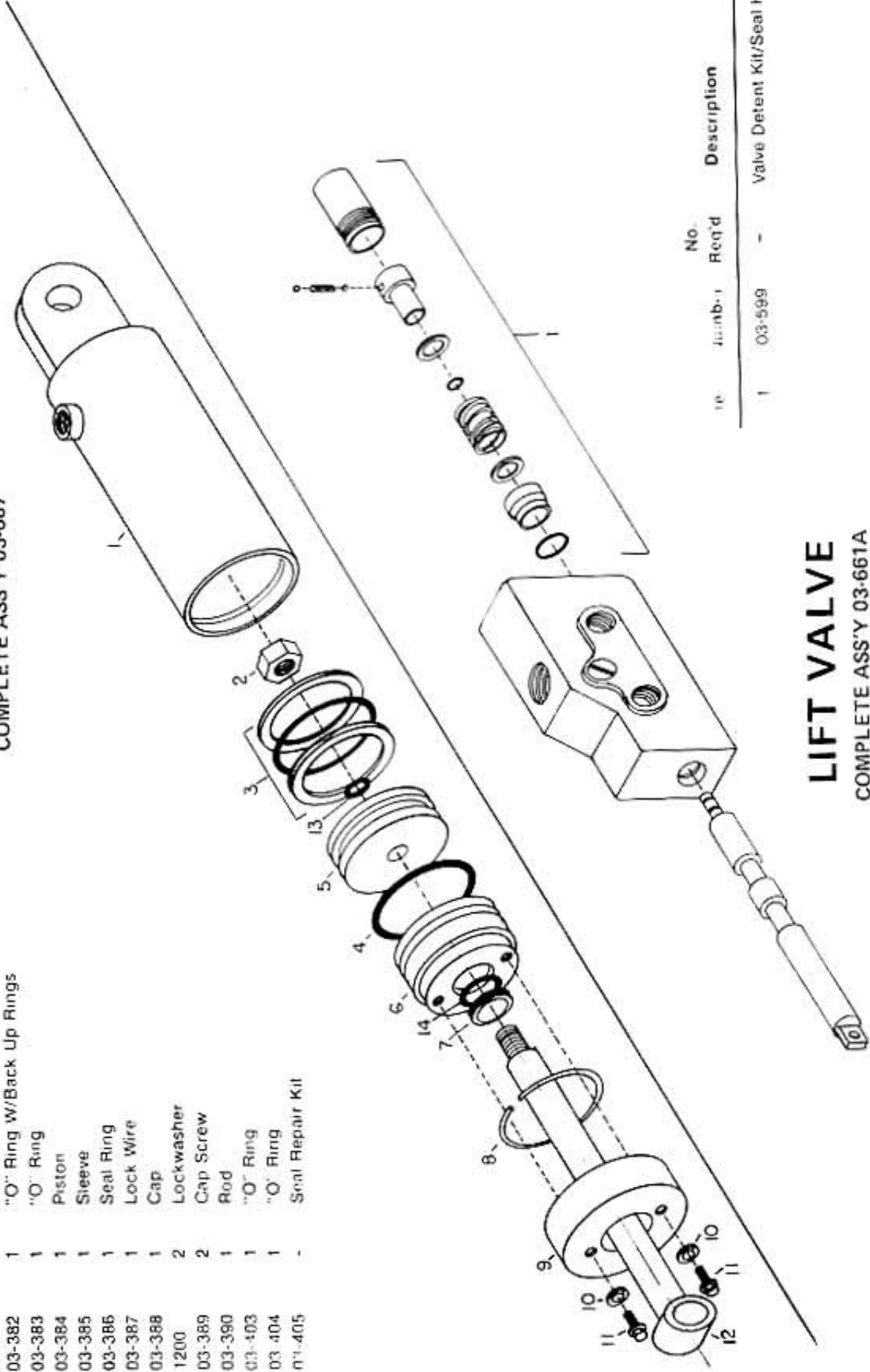


Item	Number	No. Req'd.	Description	Item	Number	No. Req'd.	Description
1	6553	1	Upper Housing	28	6113	2	Gear
2	6101	1	Lower Housing & Tube Assembly	29	6039	2	Thrust Washer
3	6029	1	Plug	30	6067	4	Bolt
4	6554	1	Retain Ring	31	6020	1	Gasket
5	6555	1	Shim Washer	32	6021	2	Pin
6	6556	1	Bearing Cone	33	1102	8	Hex Nut
7	6105	1	Bearing Cup	34	1201	8	Lockwasher
8	6050	1	Spacer	35	6019	1	Vent Tube Assembly
9	6557	Set	Shim	36	6008	2	Seal
10	6558	1	Bearing Cup	37	6114	2	Bearing Retainer
11	6559	1	Bearing Cone	38	6007	2	Bearing Set
12	6560	1	Pinion/Gear Assembly	39	6083	8	Bolt
13	6110	1	Spur Gear	40	6084	8	Locknut
14	6020A	1	Gasket	41	6115	2	Dust Cover
15	6066	1	Cover	41	6116	2	Brake Mounting Plate
16	6069	8	Bolt	43	6117	4	Brake Shoe
17	1023	8	Bolt	44	6118	2	Spring - Right
18	6068	2	Cap	45	6119	2	Spring - Left
19	6037	1	Differential	46	6120	2	Spring - Lower
20	6043	1	Pin	47	6121	2	Star Wheel
21	6036	10	Bolt	48	6122	2	Adj. Tube
22	6036	Set	Shim	49	6122	2	Tube
23	6111	2	Bearing Cone	50	6124	2	Seal Plate
24	6112	2	Bearing Cup	51	6125	2	Axle
25	6065	1	Shaft	52	6070	10	Lug Bolt
26	6041	2	Thrust Washer	53	6126	2	Brake Lever Assembly
27	6042	2	Gear	54	6127	4	Lever Ret. Clip

LIFT CYLINDER

COMPLETE ASS'Y 03-667

Item	Number	No. Req'd.	Description
1	03-380	1	Cylinder Body
2	03-381	1	Locknut
3	03-382	1	"O" Ring W/Back Up Rings
4	03-383	1	"O" Ring
5	03-384	1	Piston
6	03-385	1	Sleeve
7	03-386	1	Seal Ring
8	03-387	1	Lock Wire
9	03-388	1	Cap
10	1200	2	Lockwasher
11	03-389	2	Cap Screw
12	03-390	1	Rod
13	03-403	1	"O" Ring
14	03-404	1	"O" Ring
15	01-405	-	Seal Repair Kit



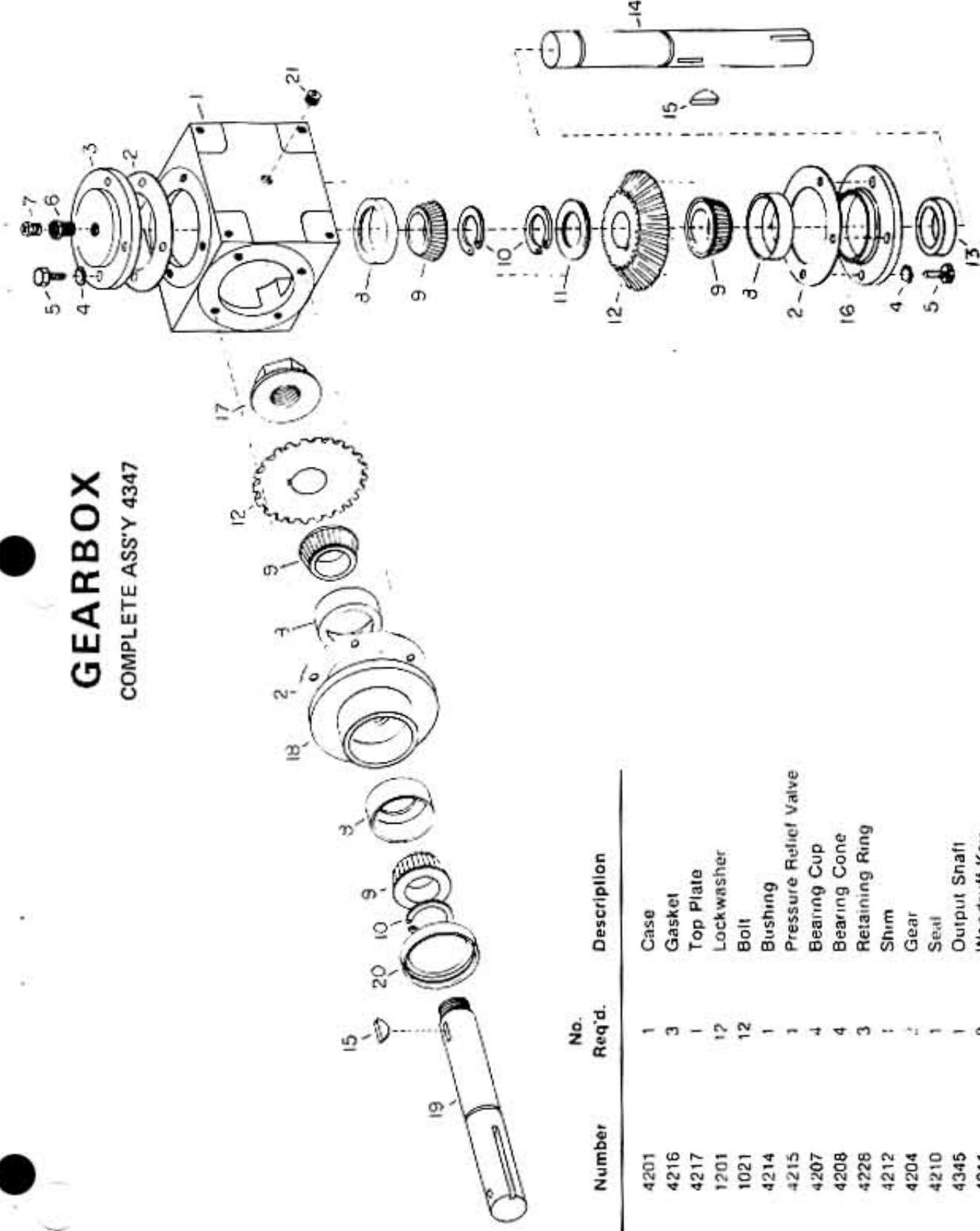
LIFT VALVE

COMPLETE ASS'Y 03-661A

Item	Number	No. Req'd.	Description
1	03-599	-	Valve Detent Kit/Seal Kit

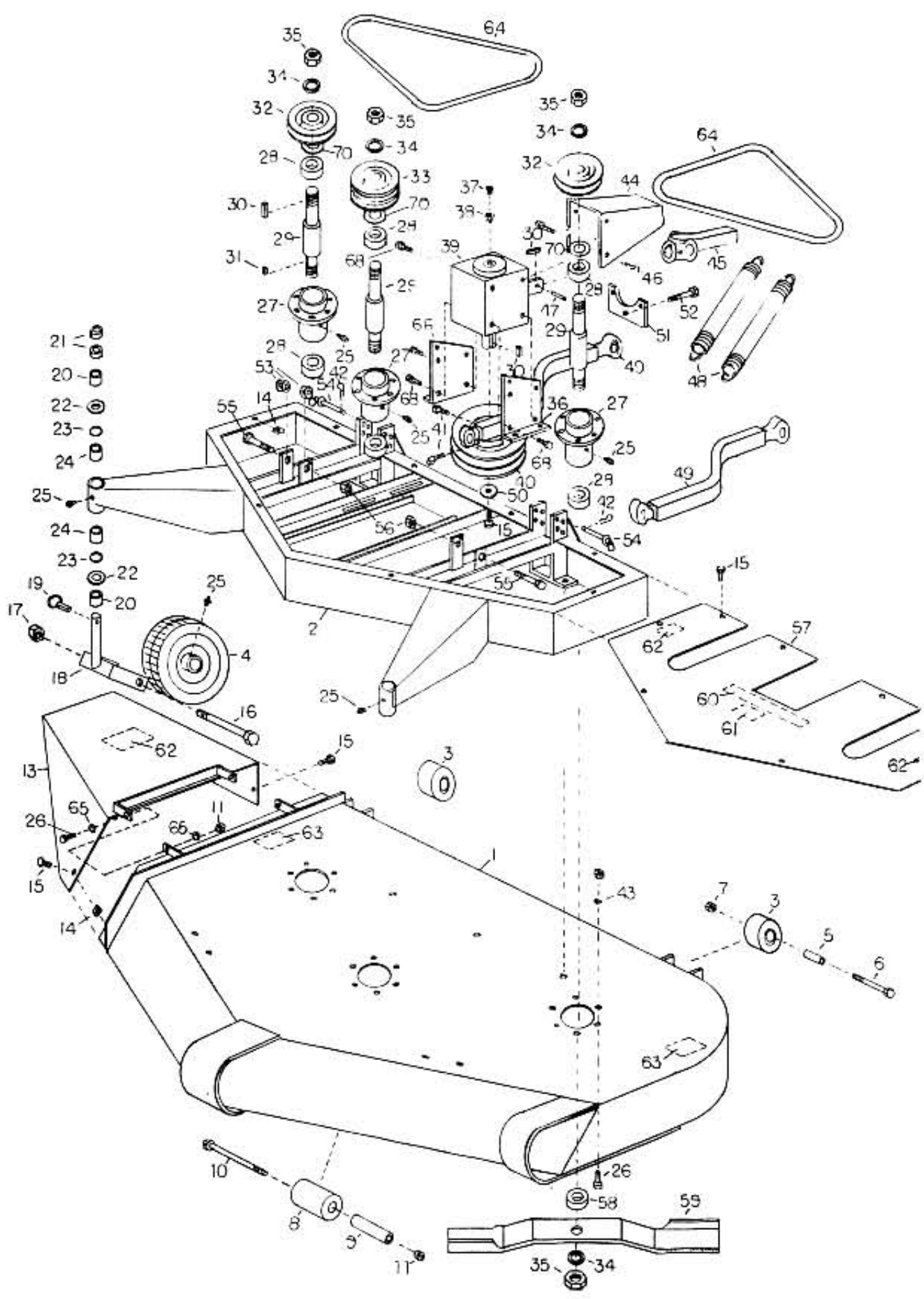
GEARBOX

COMPLETE ASS'Y 4347



Item	Number	No. Req'd.	Description
1	4201	1	Case
2	4216	3	Gasket
3	4217	1	Top Plate
4	1201	12	Lockwasher
5	1021	12	Bolt
6	4214	1	Bushing
7	4215	1	Pressure Relief Valve
8	4207	4	Bearing Cup
9	4208	4	Bearing Cone
10	4228	3	Retaining Ring
11	4212	1	Shim
12	4204	-	Gear
13	4210	1	Seal
14	4345	1	Output Shaft
15	4211	2	Woodruff Key
16	4202	1	Bottom Plate
17	4263	1	Adjusting Nut
18	4203	1	Side Plate
19	4262	1	Input Shaft
20	4209	1	Seal
21	4213	3	Plug

60" & 72" ROTARY MOWER



Item	Number	No. Req'd.	Description	Item	Number	No. Req'd.	Description
1	07-300	1	Grass Pan - 72"	38	4214	1	Reducer Bushing
2	07-310	1	Grass Pan - 60"	39	4347	1	Gearbox
3	07-301	1	Frame - 72"	40	4163	1	Pulley
4	07-311	1	Frame - 60"	41	1225	2	Setscrew
5	4129	2	Caster Wheel - Rear	42	4104	2	Clip Pin
6	05-091	2	Caster Wheel - Front	43	1201	25	Lockwasher - 5/16"
7	4264	2	Bushing	44	07-014	1	Drive Shaft Guard
8	10-33	2	Bolt	45	04-119B	1	Drive Shaft - Male
9	1112	2	Locknut - 3/8"	46	1031	4	Bolt - 3/8 x 1
10	4229	1	Roller	47	1132	1	Roll Pin - 5/16 x 1 1/2"
11	4260	1	Bushing	48	04-131	2	Spring
12	1080	1	Bolt - 5/16 x 5-1/2"	49	07-305	2	Push Arm - 72"
13	1111	23	Locknut - 5/16"	50	07-312	2	Push Arm - 60"
14	07-302	1	Chute - 72"	51	1229	1	Flatwasher
15	4294	1	Chute - 60"	52	4340	1	Gearbox Tension Bracket
16	1732	10	"U" Nut	53	1758	1	Adjusting Bolt - 7/16 x 4"
17	1000	11	Bolt - 1/4 x 3/4"	54	1223	8	Flatwasher - 3/4"
18	1068	2	Axle Bolt - 5/8 x 6"	55	07-015	2	Rear Deck Pin - 72"
19	1113	2	Locknut - 5/8"	56	4287	2	Rear Deck Pin - 60"
20	07-308	2	Caster Yoke	57	1069	2	Bolt - 72" 3/4 x 9-1/2"
21	07-016	2	Klick Pin	58	1065	2	Bolt - 60" 5/8 x 9-1/2"
22	07-000	4	1" Spacer	59	1114	2	Locknut - 72" 3/4"
23	07-001	4	1/2" Spacer	60	1113	2	Locknut - 60" 5/8"
24	1734	4	Flatwasher	61	4344	1	Cover - 72"
25	03-171	4	"O" Ring	62	4343	1	Cover - 60"
26	04-002	4	Bushing	63	07-006A	3	Blade Adaptor
27	1500	5	Grease Fitting	64	07-204	3	Blade - 72"
28	1031	27	Bolt	65	07-108	3	Blade - 60"
29	07-009	3	Blade Hub	66	7039	1	Decal - "Turf Blazer"
30	04-105	6	Blade Shaft Bearing	67	7011	1	Decal - "72"
31	07-113-A	3	Blade Shaft	68	7012	1	Decal - "60"
32	1310	5	Key	69	7004	3	Decal - "OSHA GUARDS"
33	1317	3	Key	70	00-054	3	Decal - "Rotating Blades"
34	04-067	2	Pulley - 72"	71	3463	2	Belt - 72"
35	04-064	2	Pulley - 60"	72	3462	2	Belt - 60"
36	04-068	1	Pulley - 72"	73	1221	4	Flatwasher - 5/16"
37	04-065	1	Pulley - 60"	74	07-013	1	Gearbox Mount Bracket-Right
	1207	6	Lockwasher - 1"	75	07-008	1	Complete Blade Hub Assy.
	1731	6	Halfnut - 1" - 14	76	1032	4	Bolt - 3/8 x 1-1/4"
	07-012	1	Gearbox Mount Bracket-Left	77	1102	25	Hex Nut - 5/16-18
	4215	1	Vent Plug	78	07-011	6	Machine Bushing - Not Shown