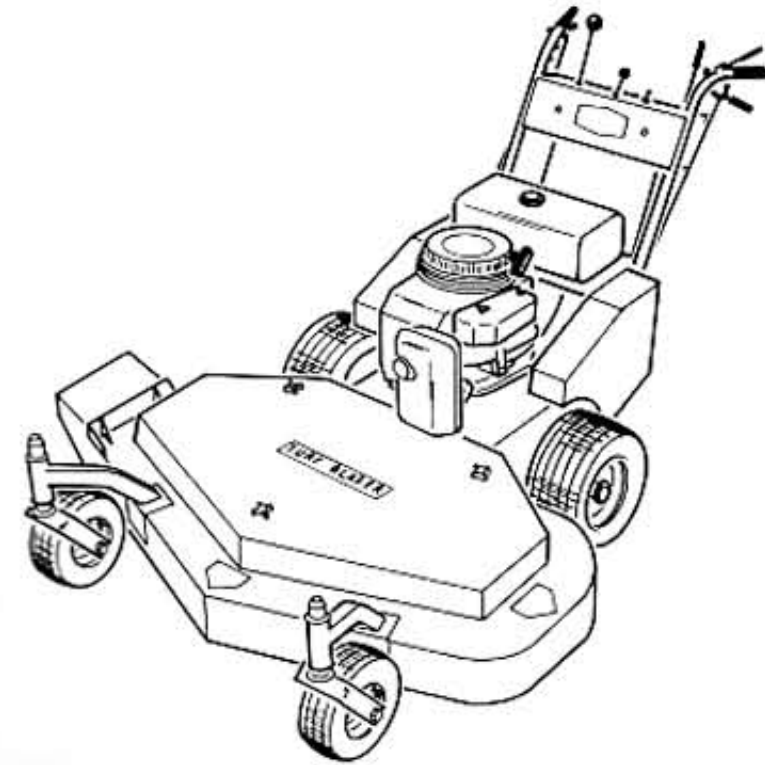




18155 Edison Avenue • Chesterfield, Missouri 63005

# TURF BLAZER WALK BEHIND



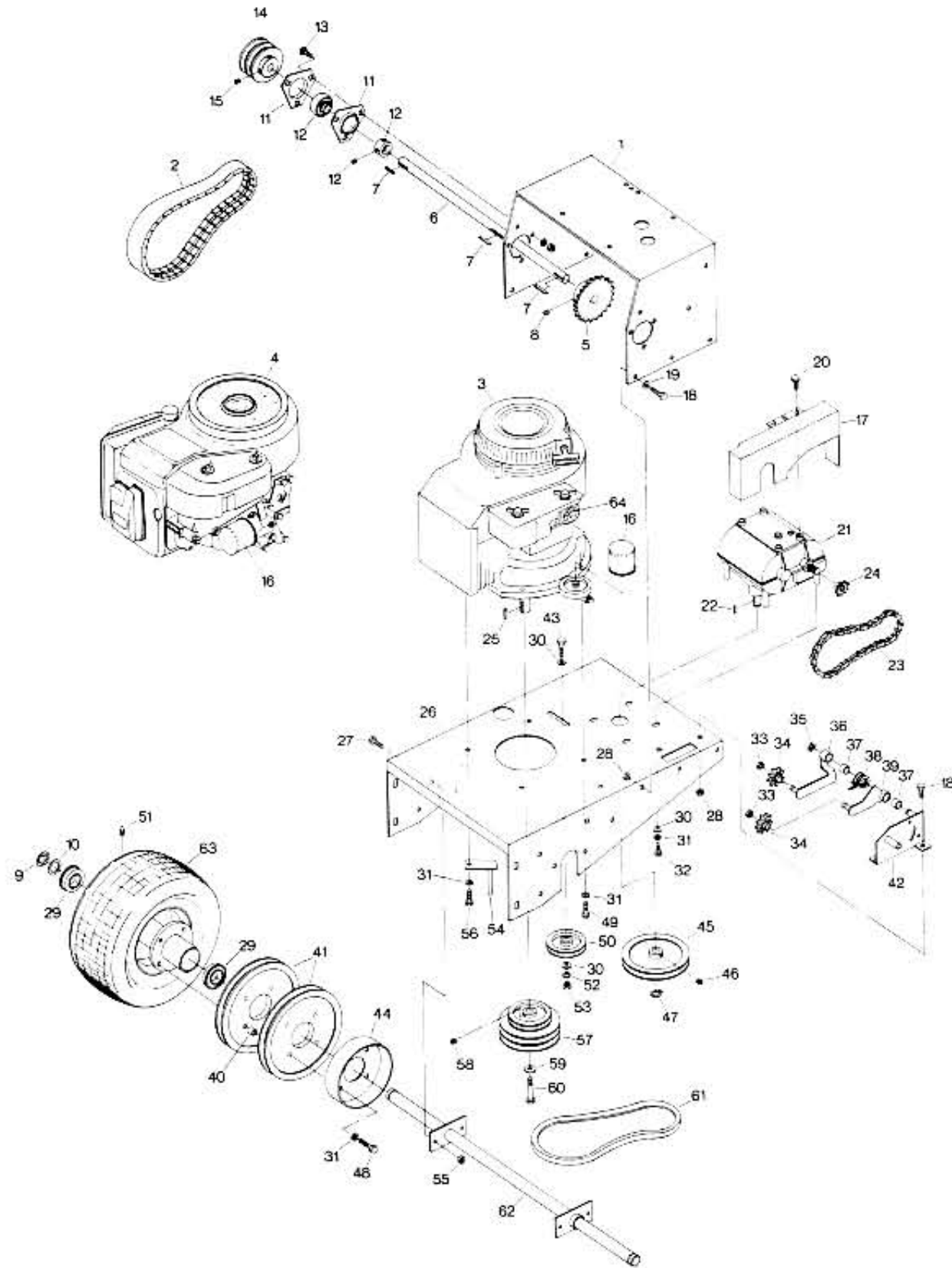
## Parts Manual

**MODELS**  
WB32-12K  
WB36-12K    WB48-12K    WB52-14K  
WB36-14K    WB48-14K    WB52-14KE  
WB36-14KE    WB48-14KE    WB52-17KE

## INDEX

TRACTION UNIT DRIVE COMPONENTS .....	1
BRAKE/CLUTCH CONTROL LINKAGES .....	3
TRACTION DRIVE/BLADE CONTROL LINKAGES .....	5
FUEL SYSTEM .....	7
INSTRUMENT PANEL/HANDLEBAR ASSY. ....	8
ELECTRICAL SYSTEM .....	9
32" & 36" CUTTING UNIT ASSY. ....	11
48" & 52" CUTTING UNIT ASSY. ....	13
DECALS .....	15
GRASS CATCHER - ALUMINUM .....	17
GRASS CATCHER - POLYESTER .....	18

# TRACTION UNIT DRIVE COMPONENTS

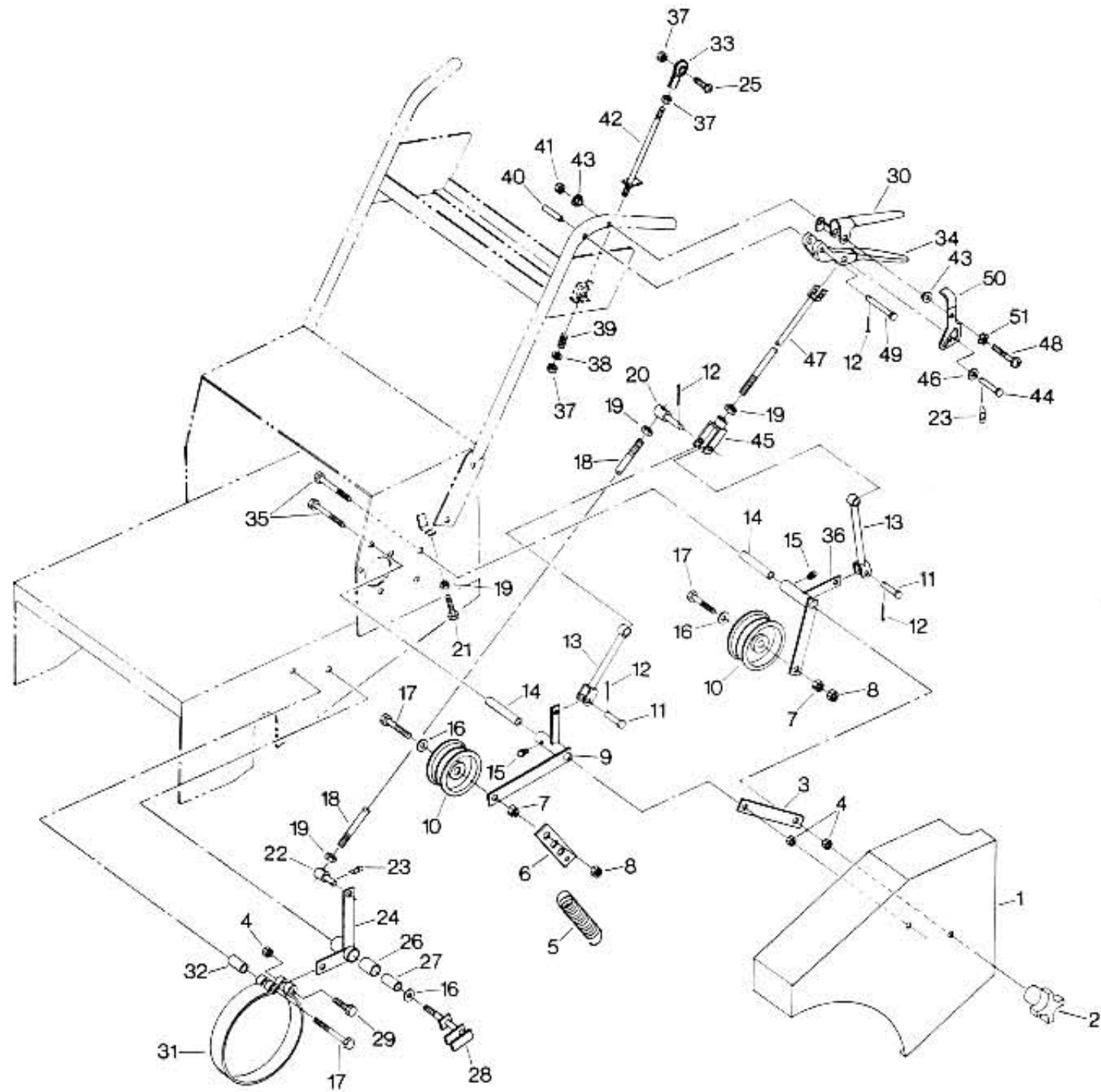


←  
FORWARD

Item	Part #	Qty.	Description
1	09-182	1	Support Assy - Fuel Tank
2	09-055	2	Belt - Traction Drive
3	09-033	1	Engine - Kawasaki 12.5 H.P. (Recoil Start)
4	09-223	1	Engine - Kawasaki 14 H.P. (Recoil Start)
5	09-205	1	Engine - Kawasaki 14 H.P. (Electric Start)
6	09-224	1	Engine - Kawasaki 17 H.P. (Electric Start)
7	09-160	1	Drive Sprocket
8	09-012	1	Drive Shaft
9	2077	3	Key 3/16" x 1 1/4"
10	2074	2	Set Screw 1/4" - 20 x 3/8"
11	09-114	2	Retaining Ring
12	07-011	2	Shimwasher 1" x 1 1/2" x 14 ga.
13	1233	As needed	Shimwasher 1" x 1 1/2" x 18 ga.
14	09-192	4	Flangette - Cross Shaft Bearing
15	08-734	2	Bearing - Cross Shaft
16	2070	6	Carriage Bolt 5/16" - 18 x 3/4"
17	09-067	2	Drive Pulley
18	2011	2	Set Screw 5/16" - 18 x 1/2"
19	09-066	1	Element - Oil Filter
20	09-358	1	Guard - Sprocket
21	1020	3	Bolt 5/16" - 18 x 3/4"
22	1220	6	Flatwasher 1/4"
23	2056	2	Bolt 5/16" - 18 x 3/4"
24	09-034	1	Transmission
25	1315	1	Woodruff Key #9 3/16" x 3/4"
26	09-159	1	Chain - #40
27	09-161	1	Master Link
28	09-162	1	Sprocket - Transmission
29	1311	1	Key 1/4" x 2"
30	09-004	1	Frame - Engine
31	1957	4	Bolt 3/8" - 16 x 1"
32	1111	8	Locknut 5/16" - 18
33	09-146	4	Wheel Bearing
34	1221	6	Flatwasher 5/16"
35	1201	16	Lockwasher 5/16"
36	1213	4	Bolt 5/16" - 18 x 1"
37	2091	2	Locking Jam Nut 3/8" - 16
38	09-329	2	Sprocket - Chain Idler
39	2197	1	"E" Ring
40	09-332	1	Idler Arm - Bottom
41	09-432	2	Bushing
42	09-407	1	Torsion Spring - Chain Idler

Item	Part #	Qty.	Description
39	09-331	1	Idler Arm - Top
40	09-100	8	Spacer - Pulley
41	09-062	4	Pulley - Traction Drive
42	09-330	1	Support Bracket - Chain Idler
43	1822	1	Bolt 3/8" - 16 x 1 3/4"
44	09-079	2	Brake Drum
45	09-009	1	Pulley - Transmission
46	2076	1	Set Screw 5/16" - 18 x 3/8"
47	09-141	1	Retaining Clip - 5/8"
48	1023	8	Bolt 5/16" - 18 x 1 1/2"
49	2105	3	Bolt 8mm - 1.25 x 25mm
50	09-070	1	Idler Pulley - Transmission Drive
51	2012	2	Grease Fitting
52	1202	1	Lockwasher 3/8"
53	1103	1	Hexnut 3/8" - 16
54	09-153	1	Belt Guide Assy
55	1112	4	Locknut 3/8" - 16
56	1859	1	Bolt 8mm - 1.25 x 30mm
57	09-155	1	Pulley - Engine
58	1796	2	Set Screw 3/8" - 16 x 1/2"
59	2096	1	Flatwasher - 10mm
60	1864	1	Bolt 10mm - 1.5 x 30mm
61	09-056	1	Belt - Engine to Transmission
62	09-003	1	Axle Assy. (36", 48" & 52" Units)
63	09-176	1	Axle Assy. (32" Unit)
64	09-044	2	Wheel Assy. (36", 48" & 52" Units)
—	09-144	—	Wheel w/Bearings Only
—	09-145	—	Tire Only
—	09-152	—	Tube Only
—	09-170	2	Wheel Assy. (32" Units)
—	09-172	—	Wheel w/Bearings Only
—	09-171	—	Tire Only
—	09-173	—	Tube Only
64	09-137	1	Paper Element - Air Cleaner (12.5 H.P.)
—	09-226	1	Paper Element - Air Cleaner (14 H.P.)
—	09-227	1	Paper Element - Air Cleaner (17 H.P.)
—	11013-	—	—
2020	11013-	1	Foam Element - Air Cleaner (12.5 H.P.)
—	11013-	—	—
2109	11013-	1	Foam Element - Air Cleaner (14 H.P.)
—	11013-	—	—
2097	11013-	1	Foam Element - Air Cleaner (17 H.P.)

# BRAKE/CLUTCH CONTROL LINKAGES

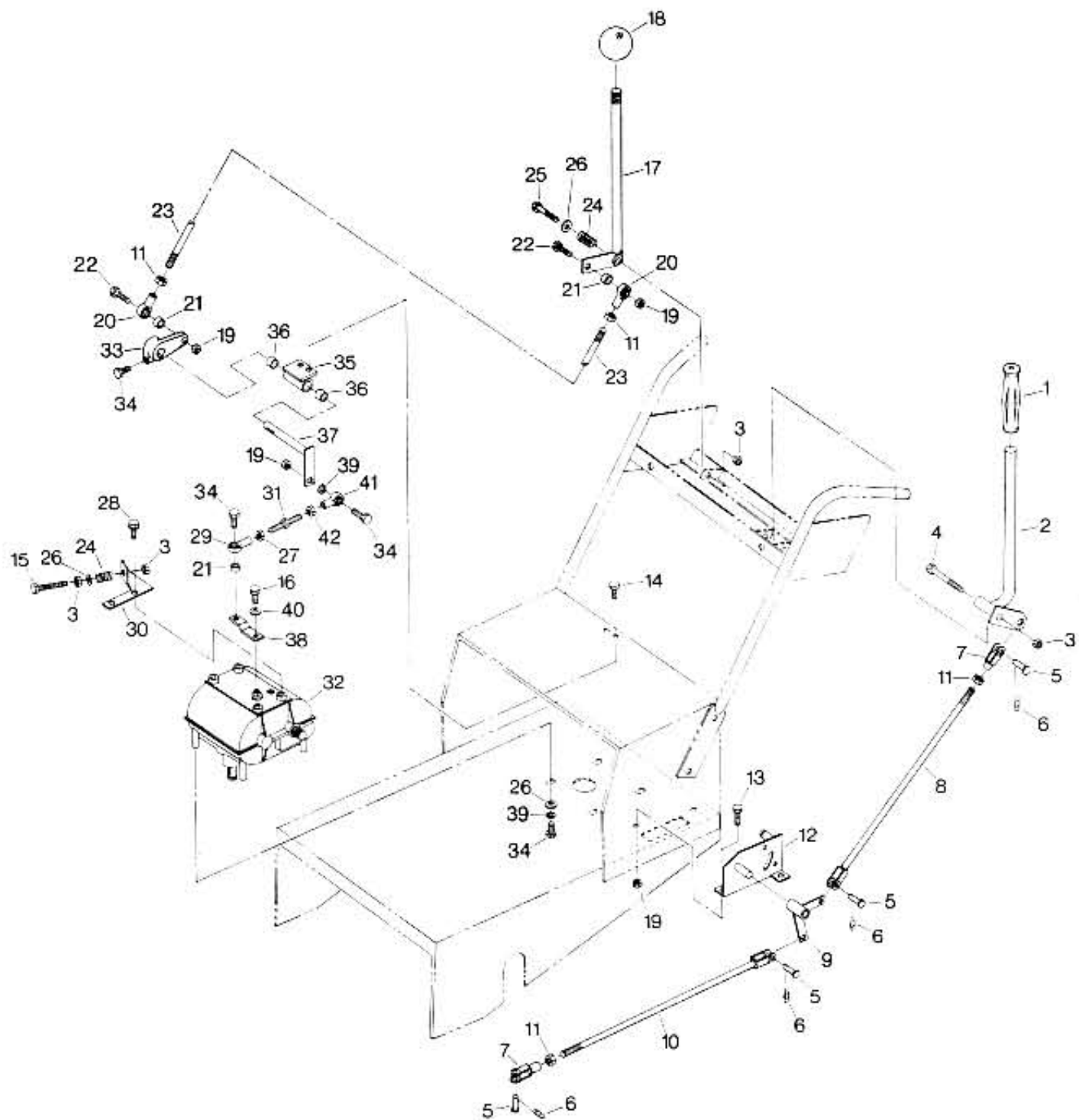


Item	Part #	Qty.	Description
1	09-030	1	Linkage Cover - L H
-	09-031	1	Linkage Cover - R H
2	09-048	4	Knob - Cover
3	09-015	2	Support Brace - Idler
4	1112	6	Locknut 3/8" - 16
5	09-151	2	Spring
6	09-201	2	Tab - Spring
7	2091	2	Lock Jam Nut 3/8" - 16
8	2108	2	Nylon Jam Locknut 3/8" - 16
9	09-185	1	Lever - Traction Drive - L H Lower
-	09-183	1	Lever - Traction Drive - R H Lower
10	09-068	4	Idler Pulley - Traction
11	2064	4	Pivot Pin - Link
12	2075	6	Cotter Pin 3/32" x 1/2"
13	09-103	4	Link - Clutch Release
14	09-016	4	Spacer
15	09-091	4	Grease Fitting - Straight
16	1221	6	Flatwasher 5/16"
17	1507	6	Bolt 3/8" - 16 x 2"
18	09-187	2	Link - Brake Rod
19	1102	8	Hexnut 5/16" - 18
20	09-102	2	Rod End - Threaded
21	1213	2	Bolt 5/16" - 18 x 1"
22	09-101	2	Rod End - Threaded
23	09-082	4	Rue Pin 5/16"
24	09-189	1	Lever Assy - Right Brake
-	09-188	1	Lever Assy - Left Brake
25	1781	2	Machine Screw 10 - 32 x 3/4" Phillips Head
26	09-199	2	Bushing

Item	Part #	Qty.	Description
27	09-200	2	Sleeve
28	09-181	2	Scraper Assy
29	2060	2	Shoulder Bolt 3/8" x 3/4"
30	09-020	1	Lever - Operator Presence L H
-	09-019	1	Lever - Operator Presence R H
31	09-063	2	Brake Band
32	09-178	2	Spacer - Brake Band
33	09-071	2	Rod End
34	09-083	2	Handle - Clutch/Brake
35	1958	4	Bolt 3/8" - 16 x 5"
36	09-186	1	Lever - Traction Drive L H Upper
-	09-184	1	Lever - Traction Drive R H Upper
37	1775	6	Locknut 10 - 32 Nylon
38	1409	2	Flatwasher 3/16"
39	09-090	2	Spring
40	09-113	2	Roll Pin 5/16" x 1"
41	1110	2	Locknut 1/4" - 20
42	09-096	2	Rod Assy
43	09-111	4	Nylon Bushing - 1/4"
44	09-093	2	Link Pin
45	09-120	2	Clevis Assy
46	1220	2	Flatwasher 1/4"
47	09-283	2	Control Rod - Clutch/Brake
48	2063	2	Machine Screw 1/4" - 20 x 2" Phillips Head
49	09-112	2	Pivot Pin - Lever
50	09-117	1	Neutral Lock Lever - L H
-	09-116	1	Neutral Lock Lever - R H
51	09-110	2	Washer - Spring

FORWARD

# TRACTION DRIVE/BLADE CONTROL LINKAGES

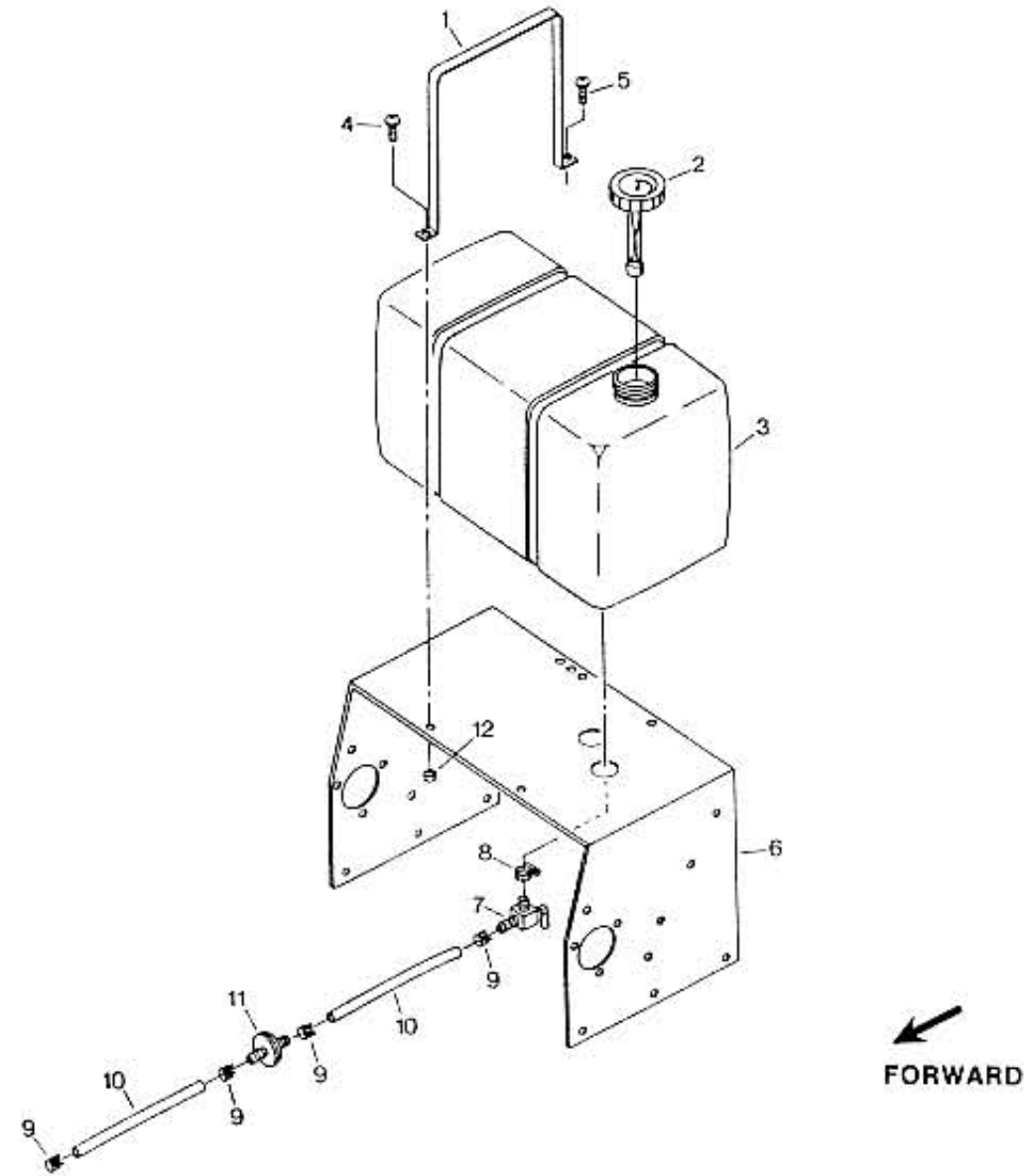


FORWARD

Item	Part #	Qty.	Description
1	09-077	1	Grip - Blade Control
2	09-046	1	Control Lever - Blade
3	1112	4	Locknut 3/8" - 16
4	1040	1	Bolt 3/8" - 16 x 3 1/4"
5	2064	4	Pin - Rod End 5/16"
6	09-082	4	Rue pin 5/16"
7	09-148	4	Clevis 5/16" - 24 x 2 1/4"
8	09-281	1	Upper Control Rod - Blade
9	09-040	1	Control Lever - Blade
10	09-504	1	Lower Control Road - Blade
11	1122	4	Hexnut 5/16" - 24
12	09-330	1	Support Bracket - Idler Sprocket
13	1020	2	Bolt 5/16" - 18 x 3/4"
14	1016	2	Bolt 1/4" - 20 x 1/2"
15	2072	1	Bolt 3/8" - 16 x 2 3/4" (Full Thread)
16	1716	1	Bolt 1/4" - 28 x 3/4"
17	09-095	1	Control Handle - Transmission
18	06-329	1	Knob
19	1111	6	Locknut 5/16" - 18
20	09-143	2	Rod End - Transmission Link
21	09-128	3	Spacer

Item	Part #	Qty.	Description
22	1022	2	Bolt 5/16" - 18 x 1 1/4"
23	09-503	1	Control Link - Transmission
24	09-097	2	Spring
25	1873	1	Bolt 3/8" - 16 x 2 1/2"
26	1221	6	Flatwasher 5/16"
27	2092	1	Jam Nut 5/16" - 24 (R H. Thread)
28	2056	2	Bolt 5/16" - 18 x 3/4" (Self Tapping)
29	09-084	1	Rod End
30	09-125	1	Bracket Assy - Transmission
31	09-086	1	Link Rod
32	09-034	1	Transmission
33	09-029	1	Lever - Transmission Control
34	1213	7	Bolt 5/16" - 18 x 1"
35	09-129	1	Support Assy - Linkage
36	09-099	2	Bushing
37	09-041	1	Shaft Assy - Linkage
38	09-156	1	Control Lever - Transmission
39	1201	5	Lockwasher 5/16"
40	1220	1	Flatwasher - 1/4"
41	09-085	1	Rod End (L H. Thread)
42	2046	2	Jam Nut 5/16" - 24 (L H. Thread)

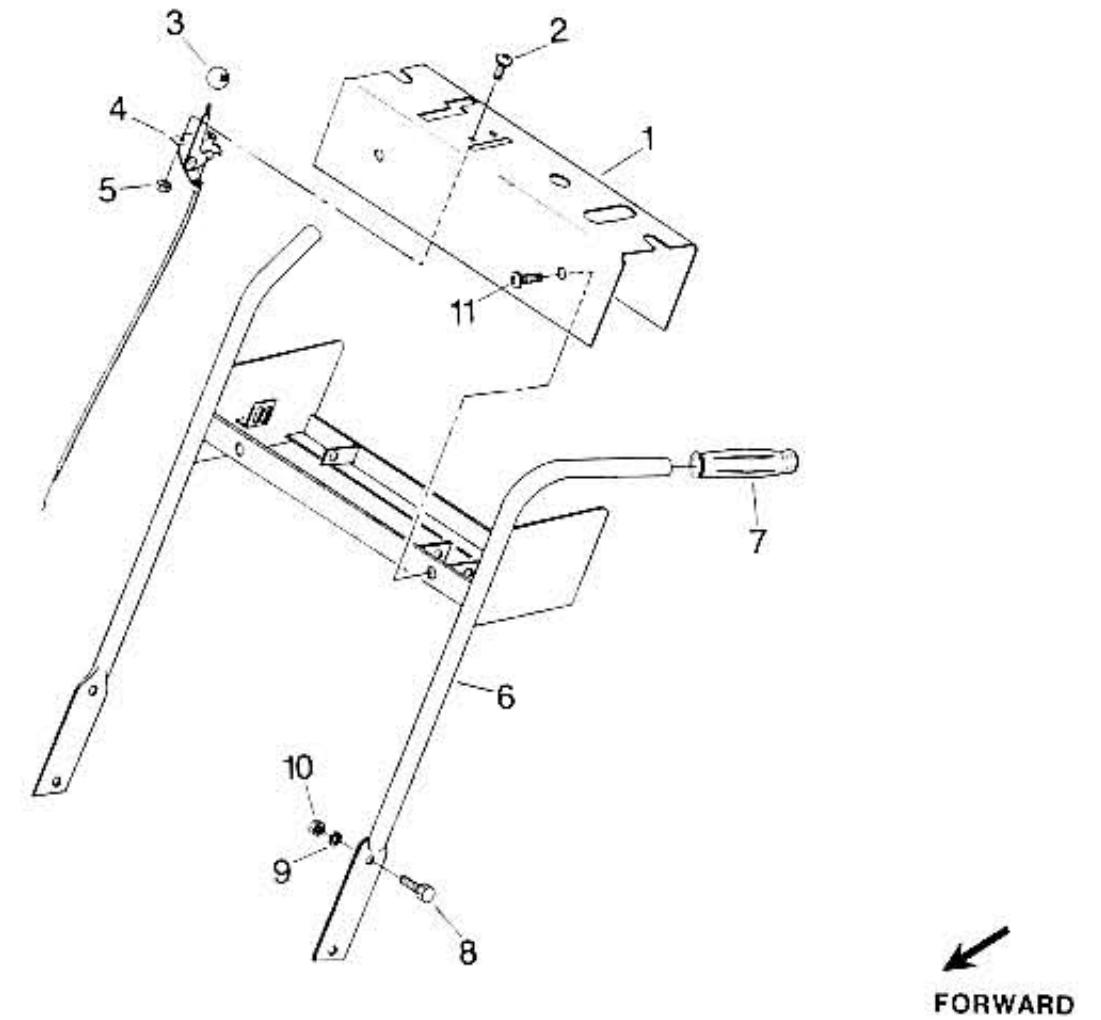
# FUEL SYSTEM



Item	Part #	Qty.	Description
1	09-132	2	Strap - Fuel Tank
2	09-047	1	Fuel Cap/Gauge
3	09-001	1	Fuel Tank
4	1781	2	Machine Screw 10 - 32 x 3/4" Phillips Head
5	1738	2	Machine Screw 10 - 32 x 1/2" Phillips Head
6	09-182	1	Support Assy.
7	09-060	1	Shut Off Valve - Fuel

Item	Part #	Qty.	Description
8	04-082	1	Hose Clamp 1/2" O D
9	2067	4	Hose Clamp 1/2" O D
10	03-705	1	Fuel Hose - 1/4" I.D. (12.5 H.P. - 14") (14 & 17 H.P. - 18")
11	09-061	1	Fuel Filter - Inline
12	1775	4	Locknut 10 - 32

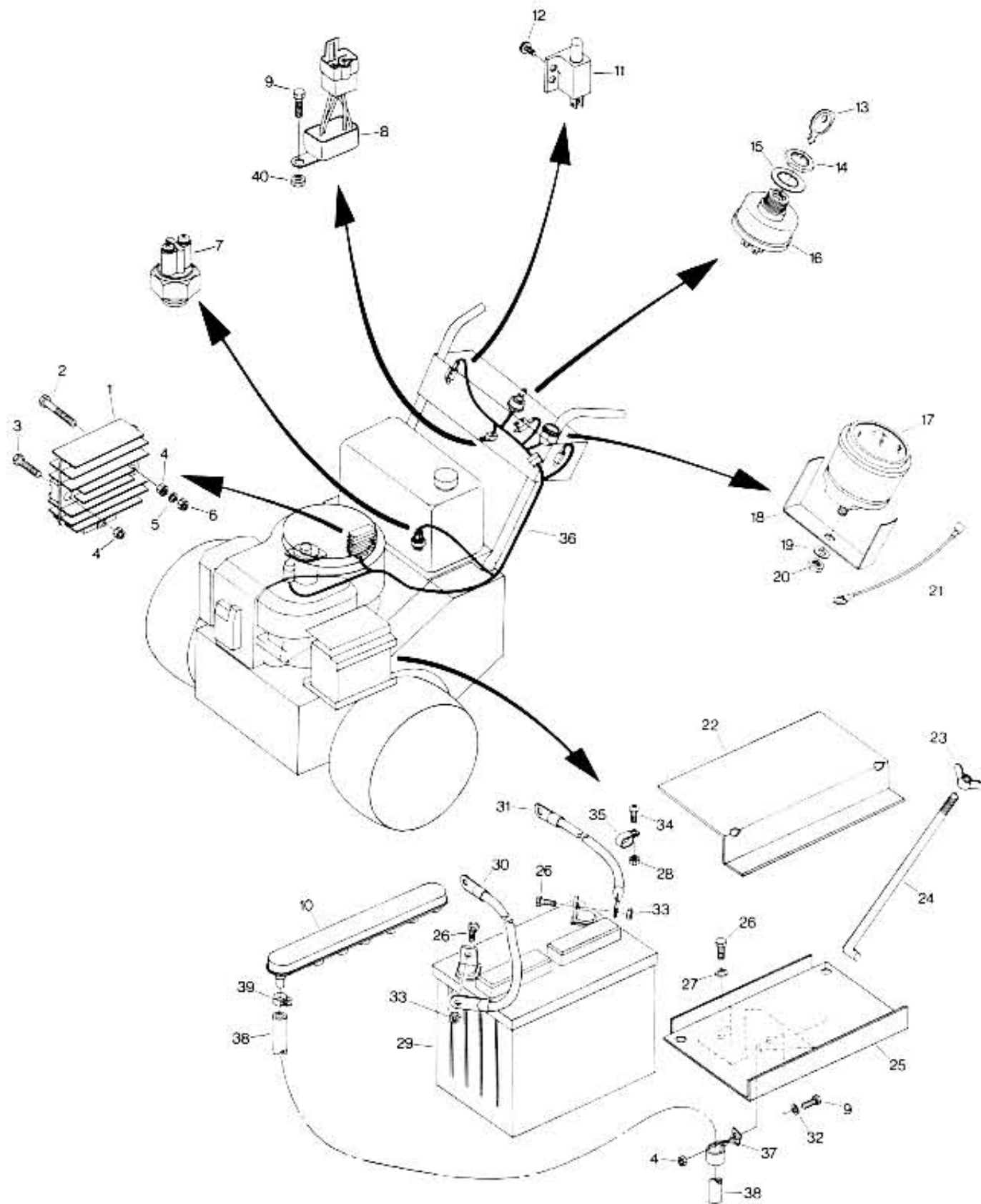
# INSTRUMENT PANEL/HANDLEBAR ASSY.



Item	Part #	Qty.	Description
1	09-212	1	Panel - Instrument (Recoil Start)
-	09-211	1	Panel - Instrument (Electric Start)
2	1781	2	Machine Screw 10 - 32 x 3/4" Phillips Head
3	5209	1	Knob - Throttle
4	09-074	1	Cable Assy w/Knob
5	1998	2	External Lockwasher Nut 10 - 32
6	09-279	1	Handle Assy

Item	Part #	Qty.	Description
7	09-078	2	Grip - Handle Bar
8	1957	4	Bolt 3/8" - 16 x 1"
9	1202	4	Lockwasher 3/8"
10	1103	4	Hex Nut 3/8" - 16
11	2062	4	Machine Screw 5/16" - 18 x 1/2" Phillips Head

# ELECTRICAL SYSTEM



←  
FORWARD

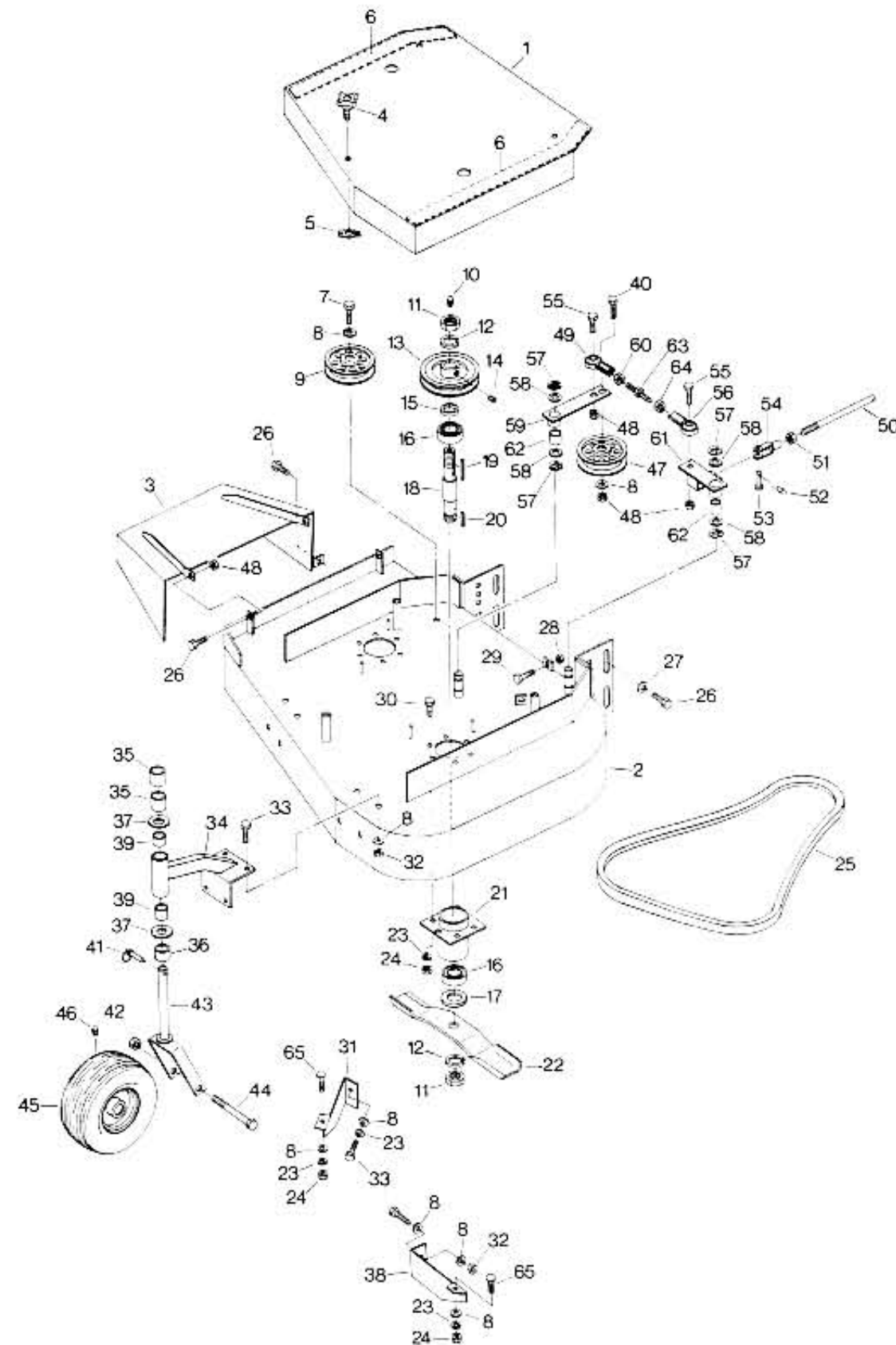
Item	Part #	Qty.	Description
1*	09-248	1	Regulator
2*	1004	1	Bolt 1/4" - 20 x 1 1/4"
3*	1003	1	Bolt 1/4" - 20 x 1"
4*	1110	3	Locknut 1/4" - 20
5*	1200	1	Lockwasher 1/4"
6*	1101	1	Hexnut 1/4" - 20
7	09-057	1	Switch - Neutral Start
8	09-059	1	Control Module
9	1016	2	Bolt 1/4" - 20 x 1/2"
10*	09-495	1	Battery Cap
11	09-058	3	Safety Switch
12	2058	6	Phillips Screw #12 x 1/2" Self Tap
13	5146	1	Ignition Key
14	1805	1	Hex Nut 5/8" - 32
15	1798	1	Starwasher - 5/8" Internal
16	02-268	1	Switch - Ignition
17*	5122	1	Hourmeter
18*	02-014	1	Mounting Bracket - Hourmeter
19*	1924	1	Starwasher #10
20*	2045	1	Hex Nut 10 - 24
21*	02-390	1	Ground Wire - Hourmeter

\* Electric Start Only

\*\* Recoil Start Only

Item	Part #	Qty.	Description
22*	09-213	1	Cover Assy - Battery
23*	1720	2	Wing Nut 1/4" - 20
24*	09-218	2	Rod - Battery Hold Down
25*	09-220	1	Support Assy - Battery
26*	1020	6	Bolt 5/16" - 18 x 3/4"
27*	1201	3	Lockwasher 5/16"
28*	1775	2	Locknut 10 - 32
29*	09-209	1	Battery
30*	5147	1	Cable - Battery To Ground
31*	09-242	1	Cable - Battery To Starter
32*	1220	1	Flatwasher - 1/4"
33*	1102	2	Hex Nut 5/16" - 18
34*	1781	2	Machine Screw 10 - 32 x 3/4" Phillips Head
35*	06-447	2	Clamp
36**	09-109	1	Harness Assy - Complete Kawasaki (Recoil Start)
—*	09-207	1	Harness Assy - Complete Kawasaki (Electric Start)
37*	09-301	1	"J" Clip
38*	03-705	1	Fuel Hose - 1/4" I.D. (11")
39*	2067	1	Hose Clamp - 1/2" O.D.
40	1110	1	Locknut 1/4" - 20

# 32" & 36" CUTTING UNIT ASSY.



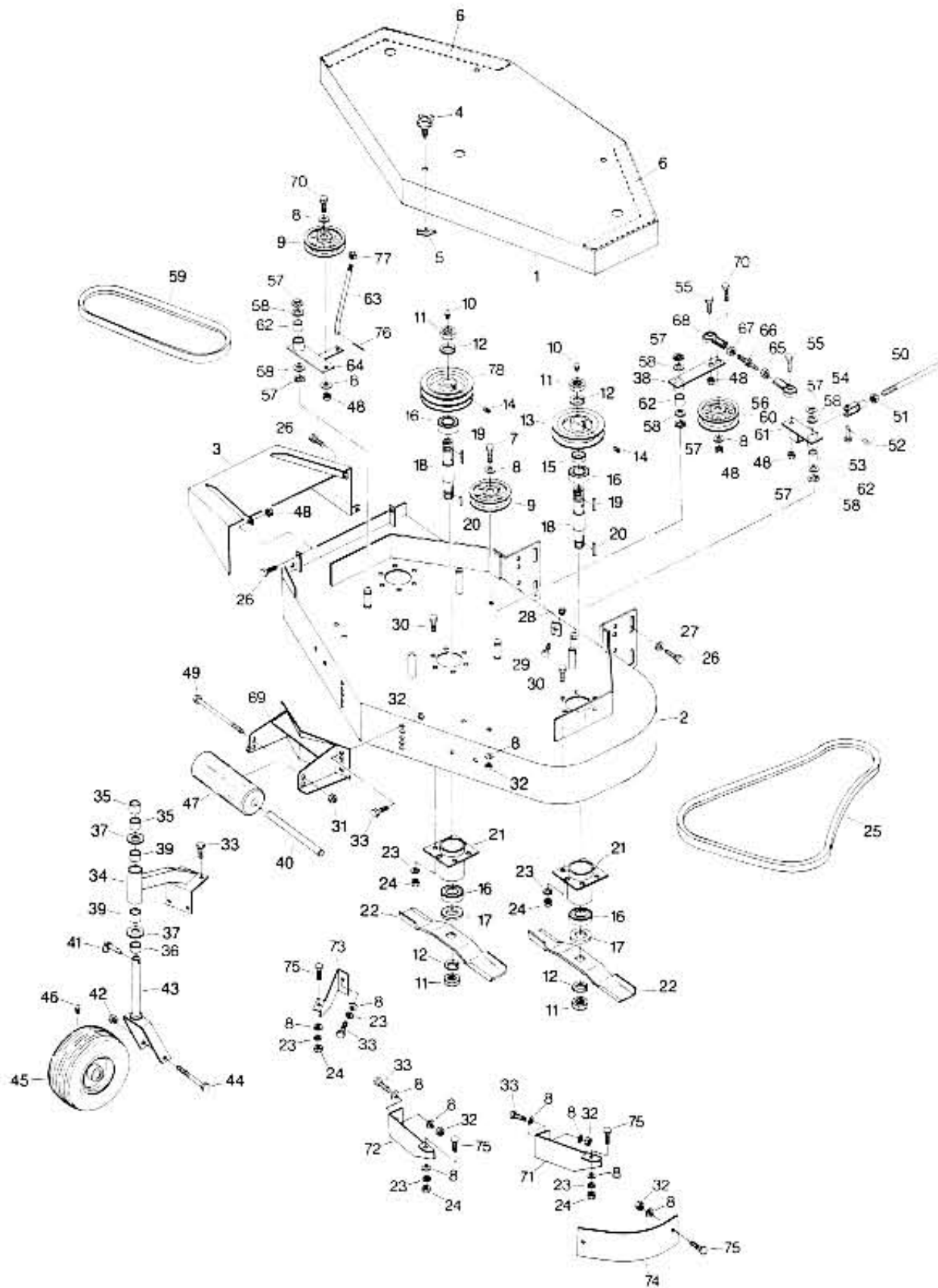
←  
FORWARD

Item	Part #	Qty.	Description
1	09-177	1	Deck Hood (32" Deck)
-	09-088	1	Deck Hood (36" Deck)
2	09-164	1	Deck Pan (32" Deck)
-	09-452	1	Deck Pan (36" Deck)
3	09-135	1	Chute Assy. (32" Deck)
-	09-353	1	Chute Assy. (36" Deck)
4	07-315	3	Knob - Deck Hood
5	2026	3	Retaining Clip
6	00-083	1	Weatherstripping (32" Deck - 42") (36" Deck - 47")
7	1507	1	Bolt 3/8" - 16 x 2"
8	1221	15	Flatwasher 5/16"
9	09-069	1	Pulley - Idler
10	1500	2	Grease Fitting - Straight
11	1731	4	Halfnut 1" - 14
12	1207	4	Lockwasher 1"
13	09-050	2	Pulley - Single Groove
14	2076	2	Set Screw 5/16" - 18 x 3/8"
15	09-092	2	Spacer - Blade Pulley
16	09-017	4	Bearing - Blade Shaft
17	09-005	2	Blade Adapter
18	09-011	2	Blade Shaft
19	1310	2	Key 1/4" x 1"
20	1317	2	Key 1/4" x 3/8"
21	09-018	2	Blade Hub Only
-	09-136	-	Blade Hub w/Shaft & Bearing
22	09-158	2	Blade (32" Deck)
-	09-157	2	Blade (36" Deck)
23	1201	15	Lockwasher 5/16"
24	1102	14	Hex Nut 5/16" - 18
25	09-163	1	Bolt - Blade Drive (32" Deck)
-	09-081	1	Bolt - Blade Drive (36" Deck)
26	1957	11	Bolt 3/8" - 16 x 1"
27	2079	8	Flatwasher 3/8" Hardened
28	1101	1	Hex Nut 1/4" - 20
29	1000	1	Bolt 1/4" - 20 x 3/4"
30	2169	12	Bolt 5/16" - 18 x 1" Gr. 8
31	09-438	1	Baffle - Right
32	1111	9	Locknut 5/16" - 18

Item	Part #	Qty.	Description
33	1020	10	Bolt 5/16" - 18 x 3/4"
34	09-280	2	Caster Arm
35	4118	4	Spacer 1"
36	4117	2	Spacer 1/2"
37	1408	4	Flatwasher 1"
38	09-399	1	Baffle - Left
39	04-406	4	Bushing - Plastic
40	1822	1	Bolt 3/8" - 16 x 1 3/4"
41	07-016	2	Klick Pin
42	1113	2	Locknut 5/8" - 11
43	09-006	2	Caster Yoke Assy.
44	1068	2	Axle Bolt 5/8" - 11 x 5 1/2" Gr. 5
45	07-188	2	Caster Wheel Assy. 9 - 3.50 x 4"
-	07-189	-	Wheel Only
-	07-190	-	Tire only
-	08-124	-	Tube Only
-	08-125	-	Bearing Kit
46	1501	2	Grease Fitting
47	09-080	1	Pulley - Belt Tightener
48	1112	5	Locknut 3/8" - 16
49	09-084	1	Rod End (R.H. Thread)
50	09-504	1	Control Rod - Blade (Lower)
51	1122	1	Hex Nut 5/16" - 24
52	09-082	1	Rue Pin 5/16"
53	2064	1	Pin - Rod End 5/16"
54	09-148	1	Clevis 5/16" - 24 x 2 1/4"
55	1213	2	Bolt 5/16" - 18 x 1"
56	09-085	1	Rod End (L.H. Thread)
57	09-115	4	Retaining Ring - 3/4"
58	1232	4	Machine Bushing 3/4" x 1 1/4" (18 ga.)
-	1234	As Needed	Machine Bushing 3/4" x 1 1/4" (10 ga.)
59	09-026	1	Lever Assy. - Blade Drive (Right)
60	2092	1	Jam Nut 5/16" - 24 (R.H. Thread)
61	09-025	1	Lever Assy. - Blade Drive (Left)
62	04-463	2	Bushing - Plastic
63	09-086	1	Link - Turnbuckle
64	2046	1	Jam Nut 5/16" - 24 (L.H. Thread)
65	2070	2	Carriage Bolt 5/16" - 18 x 3/4"



# 48" & 52" CUTTING UNIT ASSY.

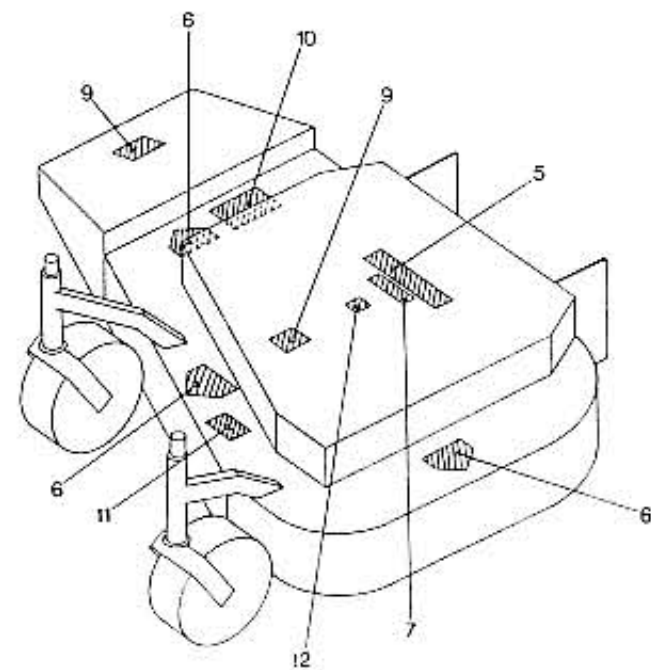
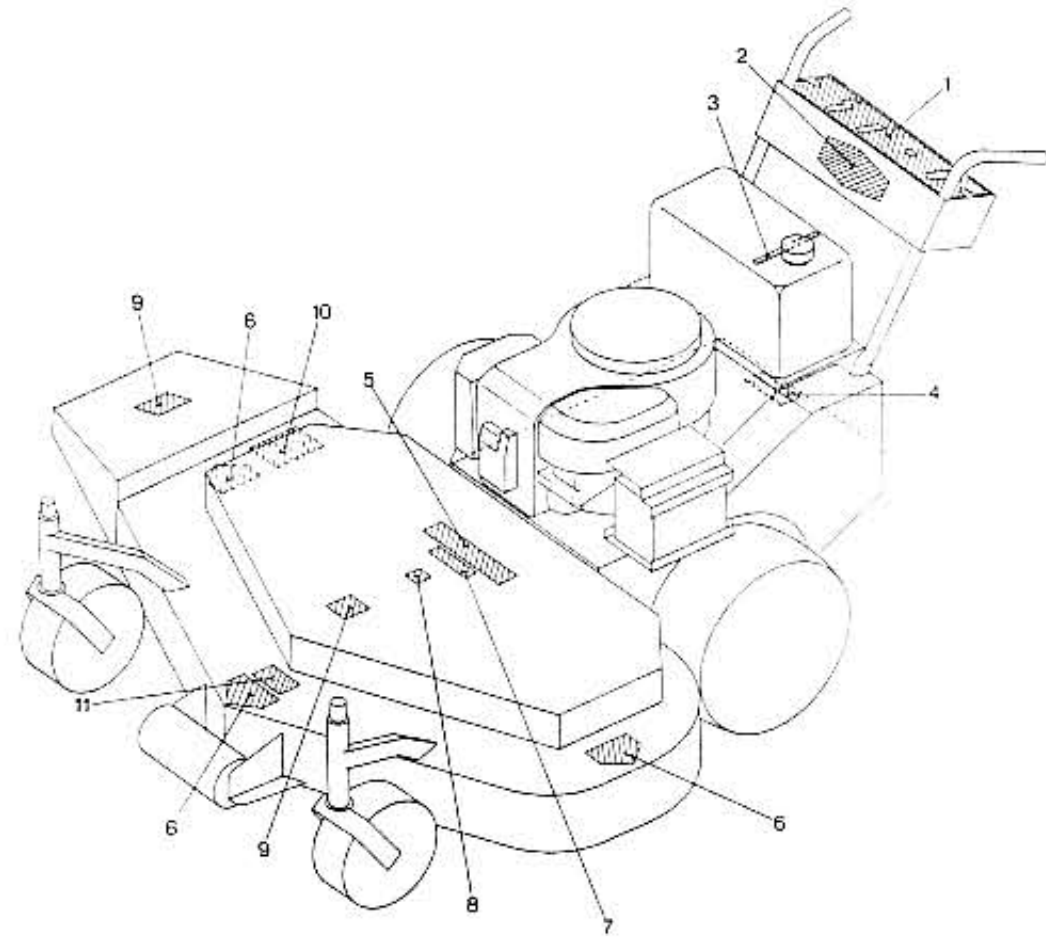


←  
FORWARD

Item	Part #	Qty.	Description
1	09-007	1	Deck Hood (48" Deck)
-	09-222	1	Deck Hood (52" Deck)
2	09-453	1	Deck Pan Assy. (48" Deck)
-	09-454	1	Deck Pan Assy. (52" Deck)
3	09-354	1	Chute Assy. (48" Deck)
-	09-355	1	Chute Assy. (52" Deck)
4	07-315	3	Knob - Deck Hood
5	2026	3	Retaining Clip
6	00-083	1	Weatherstrip (48" Deck - 42") (52" Deck - 48")
7	1507	1	Bolt 3/8" - 16 x 2"
8	1221	20	Flatwasher 5/16"
9	09-069	2	Pulley - Idler
10	1500	3	Grease Fitting - Straight
11	1731	6	Jam Nut 1" - 14
12	1207	6	Lockwasher 1"
13	09-050	2	Pulley - Outer (Single Groove)
14	2076	3	Set Screw 5/16" - 18 x 3/8"
15	09-092	2	Spacer
16	09-017	6	Bearing - Blade Shaft
17	09-005	3	Blade Adaptor
18	09-011	3	Blade Shaft
19	1310	3	Key 1/4" x 1"
20	1317	3	Key 1/4" x 3/8"
21	09-018	-	Blade Hub Only
-	09-136	3	Blade Hub w/Bearing & Shaft
22	09-158	3	Blade (48" Deck)
-	09-157	3	Blade (52" Unit)
23	1201	22	Lockwasher 5/16"
24	1102	21	Hex Nut 5/16" - 18
25	09-054	1	Belt - Engine to Blade (48" Deck)
-	09-214	1	Belt - Engine to Blade (52" Deck)
26	1957	11	Bolt 3/8" - 16 x 1"
27	2079	8	Flatwasher 3/8" Hardened
28	1101	1	Hex Nut 1/4" - 20
29	1000	1	Bolt 1/4" - 20 x 3/4"
30	2169	18	Bolt 5/16" - 18 x 1" Gr 8
31	1747	1	Locknut 1/2" x 13
32	1111	14	Locknut 5/16" - 18
33	1020	13	Bolt 5/16" - 18 x 3/4"
34	09-280	2	Caster Arm
35	4118	4	Spacer - 1"
36	4117	2	Spacer - 1/2"
37	1408	4	Flatwasher 1"
38	09-026	1	Lever Assy. - Blade Drive (Right)
39	04-406	4	Bushing - Plastic
40	07-139	1	Roller Shaft (52" Deck Only)

Item	Part #	Qty.	Description
41	07-016	2	Click Pin
42	1113	2	Locknut 5/8" - 11
43	09-006	2	Caster Yoke Assy
44	1068	2	Axle Bolt 5/8" - 11 x 5 1/2" Gr 5
45	07-188	2	Caster Wheel Assy. 9 - 3 50 x 4"
-	07-189	-	Wheel Only
-	07-190	-	Tire Only
-	08-124	-	Tube Only
-	08-125	-	Bearing Kit
46	1501	2	Grease Fitting
47	07-135	1	Roller (52" Deck Only)
48	1112	6	Locknut 3/8" - 16
49	2124	1	Bolt 1/2" - 13 x 11" (52" Deck Only)
50	09-504	1	Lower Control Rod - Blade
51	1122	1	Hexnut 5/16" - 24
52	09-082	4	Rue Pin 5/16"
53	2064	1	Pin - Rod End 5/16"
54	09-148	1	Clevis 5/16" - 24 x 2 1/4"
55	1213	2	Bolt 5/16" - 18 x 1"
56	09-085	1	Rod End (L.H. Thread)
57	09-115	6	Retaining Ring - 3/4"
58	1232	6	Machine Bushing 3/4" x 1 1/4" (18 ga.)
-	1234	As Needed	Machine Bushing 3/4" x 1 1/4" (10 ga.)
59	09-053	1	Belt - Blade to Blade (48" Deck)
-	09-215	1	Belt - Blade to Blade (52" Deck)
60	09-080	1	Pulley - Belt Tightener
61	09-025	1	Lever Assy. - Blade Drive (Left)
62	04-463	3	Bushing - Plastic
63	09-035	1	Rod - Belt Tightener
64	09-039	1	Idler Arm - R.H.
65	2046	1	Jam Nut 5/16" - 24 (L.H. Thread)
66	09-086	1	Link - Turnbuckle
67	2092	1	Jam Nut 5/16" - 24 (R.H. Thread)
68	09-084	1	Rod End (R.H. Thread)
69	09-204	1	Support Assy. - Roller (52" Unit Only)
70	1822	1	Bolt 3/8" - 16 x 1 3/4"
71	09-399	1	Baffle - Left (48" & 52" Deck)
72	09-380	1	Baffle - Center (48" Deck)
-	09-399	1	Baffle - Center (52" Deck)
73	09-342	1	Baffle - Right (48" Deck)
-	09-400	1	Baffle - Right (52" Deck)
74	09-463	1	Baffle - Front Left Corner (48" Deck)
-	09-341	1	Baffle - Front Left Corner (52" Deck)
75	2070	5	Carriage Bolt 5/16" - 18 x 3/4"
76	2075	1	Cotter Pin 3/32 x 1/2"
77	1110	1	Locknut 1/4" - 20
78	09-049	1	Pulley - Center (Double Groove)

# DECALS

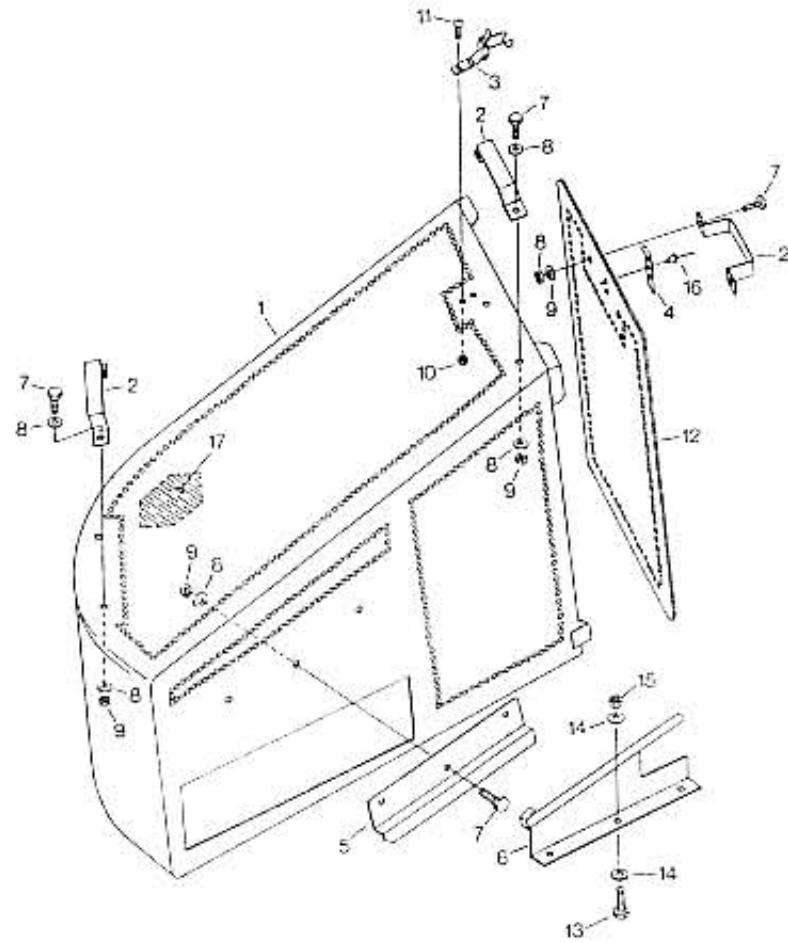


  
 FORWARD

Item	Part #	Qty.	Description
1	00-125	1	Decal - Control Panel (Recoil)
-	00-643	1	Decal - Control Panel (Electric Start)
2	7038	1	Decal - "HPTE Logo"
3	00-126	1	Decal - "Refuel Caution"
4	00-024	1	Clear Vinyl Overlay
5	7039	1	Decal - "Turf Blazer"
6	00-054	3	Decal - "Hands & Feet"
7	7003	1	Decal - "Commercial"

Item	Part #	Qty.	Description
8	7013	1	Decal - "48"
-	00-600	1	Decal - "52"
9	7018	2	Decal - "OSHA Guards"
10	00-127	1	Decal - "Caution Rotating Blades"
11	00-057	1	Decal - "Blade Nut Torque"
12	00-177	1	Decal - "32"
-	00-135	1	Decal - "36"

# GRASS CATCHER - ALUMINUM

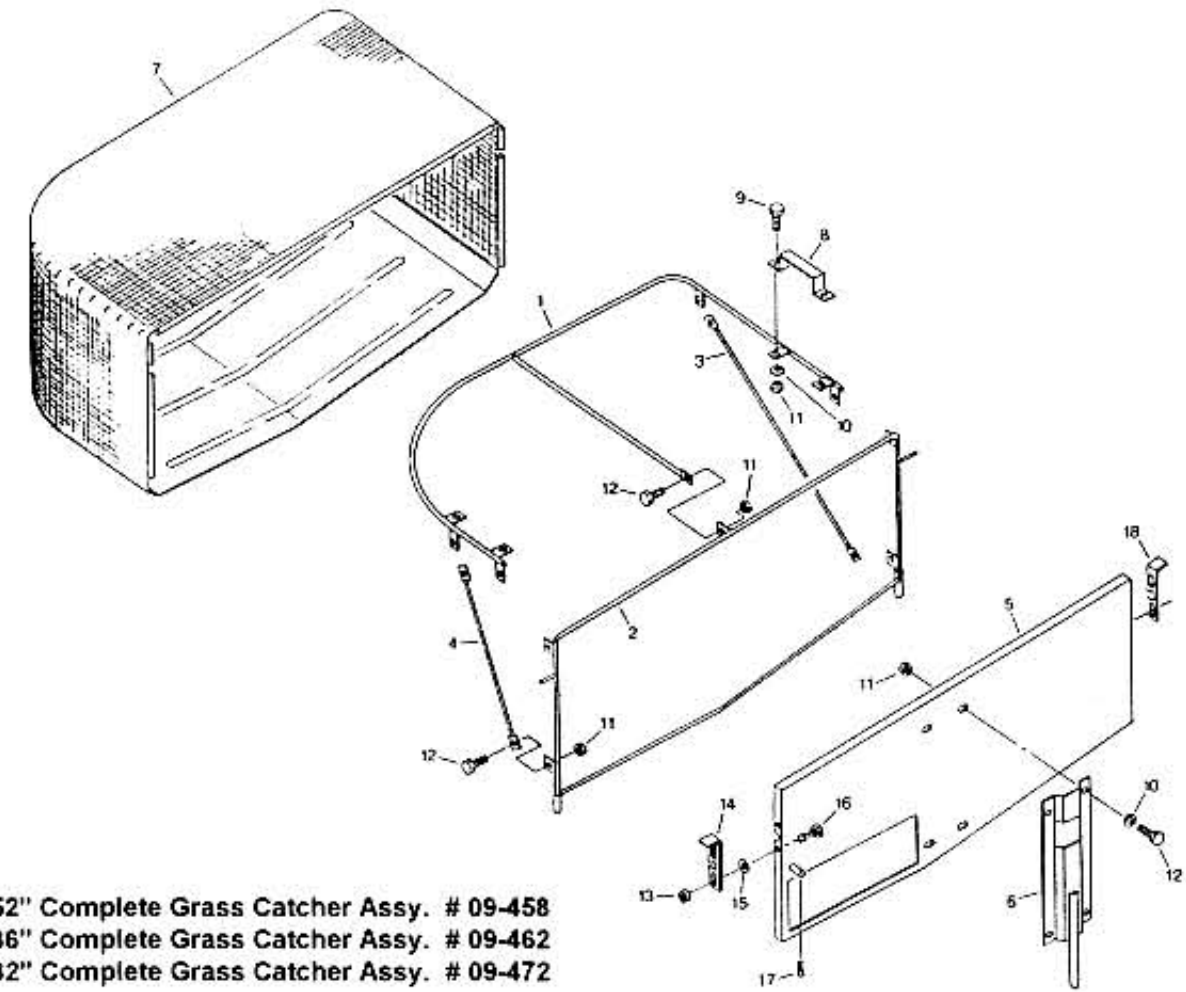


36" / 48" / 52" Complete Grass Catcher Assy. # 09-483

Item	Part #	Qty.	Description
1	09-409	1	Grass Catcher
2	09-419	3	Handle - Grass Catcher
3	09-473	1	Catch
4	09-460	1	Strike
5	09-429	1	Mount Bracket - Grass Catcher
6	09-425	1	Mount Bracket - Deck
7	1020	9	Bolt 5/16" - 18 x 3/4"
8	1221	15	Flatwasher 5/16"
9	1111	9	Locknut 5/16" - 18

Item	Part #	Qty.	Description
10	1775	2	Locknut 10 - 32 ESNA
11	1738	2	Machine Screw 10 - 32 x 1/2" Phillips
12	09-412	1	Door - Grass Catcher
13	1030	3	Bolt 3/8" - 16 x 3/4"
14	1222	6	Flatwasher 3/8"
15	1911	3	Locknut 3/8" - 16
16	1779	2	Pop Rivet 1/8" x 1/4"
17	7038	1	Decal - Logo

# GRASS CATCHER - POLYESTER



48" & 52" Complete Grass Catcher Assy. # 09-458  
 36" Complete Grass Catcher Assy. # 09-462  
 32" Complete Grass Catcher Assy. # 09-472

Item	Part #	Qty.	Description
1	09-394	1	Rod Assy - Top
2	09-398	1	Rod Assy - Inside
3	09-396	1	Rod Assy - Rear
4	09-395	1	Rod Assy - Front
5	09-397	1	Backplate Assy (48" & 52")
-	09-461	1	Backplate Assy (36")
-	09-470	1	Backplate Assy (32")
6	09-455	1	Support Assy - Backplate (36", 48", 52")
-	09-471	1	Support Assy - Backplate (32")
7	09-393	1	Grass Bag Assy
8	09-131	2	Handle

Item	Part #	Qty.	Description
9	1000	4	Bolt 1/4" - 20 x 3/4"
10	1220	8	Flatwasher 1/4"
11	1110	15	Locknut 1/4" - 20
12	1016	11	Bolt 1/4" - 20 x 1/2"
13	1775	4	Locknut 10-32
14	09-118	1	Front Latch
15	2078	4	Wave Washer #10 - 32
16	1738	4	Bolt 10 - 32 Machine Screw
17	4104	1	Hairpin Clip
18	09-119	1	Rear Latch